

We Brighten Your Brands

Product
Guide

Linear Lighting
Solutions



Linear solutions for non-linear challenges.

Linear Lighting from SloanLED is a great solution for illuminating cove, awning, and wall wash applications or to highlight non-illuminated signs.

Sealed to lock out moisture for even the most challenging applications

Easy to conceal at only 9 mm (0.35") thick

IP66 & 68-rated for indoor/outdoor use

SlimLINER

SlimLINER is the low-profile, outdoor and indoor lighting solution that offers natural white illumination for awnings, vinyl canopies, and accents. The sleek, slender design is ideal for narrow applications traditionally reserved for T4 and T5 fluorescent fixtures.

- Fast, easy installation with versatile mounting options
- Can be cut in the field to custom lengths
- Slim, lightweight, low-profile fixture
- 305 mm (12") bend radius
- Illuminates awnings evenly
- Constant Current Technology (CCT)



SloanLED LEDBlade

SloanLED LEDBlade is a powerful canopy fascia and wall wash lighting solution that focuses light in one direction using asymmetric light optic technology to deliver bright, even illumination, where you want it, without waste.

- Ideal for canopy fascia and wall wash applications requiring excellent light throw
- Can be cut to custom lengths in the field
- Linear form factor for fast, easy installation
- No UV emissions



Wire Nut Housing accessory (P/N 400860) snaps onto ends to cover wire connections and/or bridge distances between lights

Top tier LED offers industry leading performance and efficiency with 100,000 hours L₇₀ life

Co-extruded impact modified acrylic housing diffuses light and protects luminaire to provide long operating life

Easily daisy chain up to six 1.2 m (4 ft) luminaires using lead wires located on both sides of the fixture

HighLINER 3

Designed to replace fluorescent lighting, HighLINER 3 is a versatile product for canopies, soffits, awnings, and wall washes, that offers natural, white, outdoor and indoor linear illumination for both new construction and retrofit projects, while saving energy, and reducing maintenance costs, for a brilliant bottom line.

- Easy installation for both new construction and retrofit
- Improves walkway and aisle visibility and building aesthetics
- Fits easily into new or existing interior and exterior spaces
- Constant Voltage Technology (CV)
- Easily daisy-chain up to six (6) 1.2-m (4-ft) luminaires with 100 W driver
- NSF/ANSI 2 qualified for use around food processing and on processing equipment

Specifications

For more information on our Linear Lighting collection of products, visit SloanLED.com.



HighLINER 3

Model	System power	Output (nominal)	
		3500 K	5000 K
0.3 m (1')	4.6 W	559 Lumens	607 Lumens
0.6 m (2')	9.3 W	1,119 Lumens	1,168 Lumens
1.2 m (4')	18.5 W	2,237 Lumens	2,430 Lumens
1.8 m (6')	27.8 W	3,356 Lumens	3,646 Lumens
2.4 m (8')	37.0 W	4,475 Lumens	4,861 Lumens

System efficacy*

3500 K 126 lm/W
5000 K 132 lm/W

Ingress protection

Luminaire IP68†
Std. wire nut IP66
with housing§

UL location rating

Dry, damp, and wet locations

Life rating

Per IES TM-21 @ 25° C (70° F):

Reported L₉₀ >36,000 hours

L₇₀ >60,000 hours

Calculated L₇₀ >100,000 hours‡

Dimming

All luminaires dimmable with 0-10 VDC
or PWM input to drivers

* Tolerance range for optical and electrical data +/- 15%.

† IP68 ratings provide protection for extreme outdoor and wet applications,
or harsh weather exposure. Do not mount in submerged applications.

‡ Based on LED component manufacturer data.

§ Luminaires ship with mounting clips and wire nut housings.



SlimLINER

Lumens per fixture

3500 K 825

5000 K 970

In-field bends

Radial bend 305 mm (12")

Estimated product lifetime

50,000 hours (L₇₀)

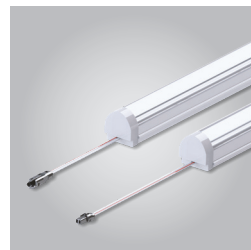
Protection class

IP66 & IP68†

Efficacy

3500 K 92 lm/W

5000 K 108 lm/W



SloanLED LEDBlade

Lumens per assembly

3,118

Power per assembly

30 W

Estimated product lifetime

>60,000 hours (L₇₀)

Protection class

IP66

Efficacy

120 lm/W

We Brighten Your Brands

SloanLED Headquarters

5725 Olivas Park Drive, Ventura, CA, USA
805.676.3200 • info@SloanLED.com

SloanLED Europe b.v.

Argonstraat 110, 2718 SN Zoetermeer, NL
+31 88 12 44 900 • europe@SloanLED.com



SloanLED.com

Specifications subject to change without notice.

© 2021 SloanLED Rev E 2021-12-23



SloanLED®
Leaders in LED Technology