

Cold Deck

LED lighting system for multi-deck merchandisers

Cold Deck lighting system is designed to optimize visual appeal of produce, meat, and dairy cases (multi-deck merchandisers). Extends shelf life of perishables through reduced heat output.

- Eliminates the need to de-merchandise cases while upgrading
- Illuminates product facings with crisp, uniform light dispersion
- **Up to 77% energy savings compared with typical fluorescent fixtures**

Dongle – Powers lights through existing fluorescent lamp holders. Patent pending feature eliminates the need to de-merchandise.

Lamp holder bands – Attaches the dongle to the existing lamp holder.

Rare-earth magnets – Secures lights to shelves without the need to be mechanically affixed.

Stand-off clips – Snaps together to adapt to different canopy depths and angles.

Class 2 rating – Converts case to a low voltage system.

Specifications

Electrical

Input voltage	100-240 VAC, 50-60 Hz
Output voltage	24 VDC, Class 2 low voltage
System power	

	3	4
Canopy	17 W	23 W
Shelf	6 W	8 W

Lighting

Illuminance	Canopy 1,000 lux ¹ Shelf 1,800 lux ²
Color temperature (CCT)	2700 K, 3500 K, 4000 K
Color rendering (CRI)	85

Performance

Ingress Protection	IP68 (highest dust and water protection)
Operating temperature	-25 °C to 50 °C
Life rating	100,000 hours (L ₇₀) ³
Dimming	Optional Motion Sensing (see Cold Series Dimming Control data sheet)

Construction

Housing	Acrylic, impact modified with UV stabilization
Body color	White

Mounting

Canopy	Stand-off Clips (6 included)
Shelf	Magnetic or mechanical (screws not included)

Documentation

Warranty	5-year limited
Agency listings	UL Listed, UL (NSF/ANSI 2), CE
Files available	LM-79, LM-80, IES

¹ Canopy measured at 53" from light.

² Shelf measured at 12" from light.

³ Based on LED component manufacturer data.

Interior

Downlighting



Project Name/Location

Part Number

Notes#

Date

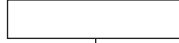


SloanLED[®]
Leaders in LED Technology
Lighting Systems

Ordering Information

Example: 701940-4WC4X1

701940 —



Color Temperature

Code	Description
2W	2700 K
3W	3500 K
4W	4000 K



Type

Code	Description
C	Canopy
S	Shelf



Length

Code	Description
3	3'
4	4'



Connection

Code	Description
x1	Dongles
x2	Flying Leads, one end
y2	Flying Leads, both ends

Power Supplies¹

Description	Part Number
100 W, with Power Control	701895-24C

Dimming

Description	Part Number
Dimming Controller	701890-PWR
Occupancy Sensor, Standard ³	400661
Occupancy Sensor, Wide ⁴	400964

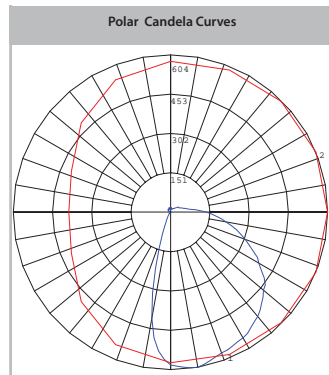
Accessories²

Description	Part Number
Stand-off Clip	401091
5 Clip Spanner Wrenches	401368-5
Small Terminal Block	401350
Large Terminal Block	401351

- 1 Single power supply can drive up to (4) canopy lights or (12) shelf lights.
- 2 (6) clips included with each canopy light to space by ½" or angle by 10°. Additional clips may be used to increase spacing and/or angle (see install guide). Additional clips may also be used to angle shelf lights if desired. Screws not included for fastening to non-magnetic shelves.
- 3 May require an L-bracket (not included) for mounting.
- 4 Alternative for 400661. Cat 5 cabling to the sensor not included.

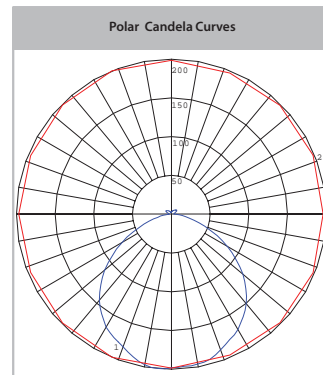
Photometrics

Canopy



Vertical Plane Horizontal Cone

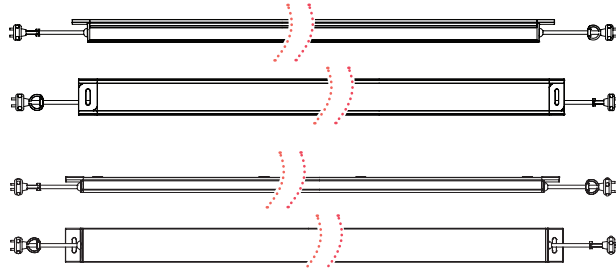
Shelf



Vertical Plane Horizontal Cone

Dimensions

weight = 0.8 lbs (canopy), 0.6 lbs (shelf)



3' Canopy 34.05" x 1.75" x 1.15"
4' Canopy 46.05" x 1.75" x 1.15"



3' Shelf 34.05" x 1.75" x 0.80"
4' Shelf 46.05" x 1.75" x 0.80"

Dongle versions shown.



5725 Olivas Park Drive, Ventura, CA 93003
805.676.3200 Fax 805.676.3206
info@SloanLED.com SloanLED.com

Cold Deck is covered by patents pending.

© 2017 SloanLED Rev H 2017-04-07