

PML3 Paladin

LED pole mount family for area lighting

Specifications

Electrical

Input voltage 100-277 VAC, 50-60 Hz

Size	System power	System efficacy	Inrush current
200 W	212.3 W	99.3 lm/W	30 A
160 W	153.5 W	107.3 lm/W	65 A
120 W	116.9 W	105.6 lm/W	60 A
90 W	89.5 W	103.7 lm/W	60 A
60 W	56.4 W	104.5 lm/W	55 A
40 W	37.7 W	104.8 lm/W	50 A
30 W	33.4 W	101.0 lm/W	50 A

Lighting

Size	Light output (nominal)	Pole height & FC correlation							
		12' (3.6m)	15' (4.5m)	20' (6.0m)	25' (7.6m)	30' (9.0m)	35' (10.5m)	40' (12m)	
200 W	21,074 Lumens	39	25	14	10	7	6	6	
160 W	16,464 Lumens	31	20	11	8	5	5	4	
120 W	12,347 Lumens	24	15	9	6	5	4	4	
90 W	9,283 Lumens	18	12	7	5	4	4	3	
60 W	5,900 Lumens	12	8	5	3	3	2	2	
40 W	3,946 Lumens	8	5	3	2	1	1	1	
30 W	3,371 Lumens	7	4	3	2	1	1	1	

Light distribution Type III and Type V

Color temperature (CCT) 5000 K

Color rendering (CRI) >75

Performance

Ingress protection IP66

IK Code IK09

Operating temperature -35° C to 50° C

Life rating 70,000 hours (L₇₀)[†]

* Based on LED component manufacturer data.

† Performance+ Service Warranty applies to U.S. installations ONLY.



Construction

Body Die cast aluminum

Body colors Bronze, Silver, and White

Dimensions L × W × H **Large** 34.5" × 15.8" × 7.15"
(878 mm × 402 mm × 182 mm)
Medium 29.8" × 13.1" × 6.6"
(758 mm × 332 mm × 167 mm)

Weight **Large** 34 lbs (15.6 kg)
Medium 23 lbs (10.5 kg)

Mounting

Adjustable slipfitter Die cast aluminum fitter adjusts incrementally 15° up from horizontal and 15° down from horizontal

Pole top **Large** Fitter mates to nominal
Ø 3.0" (76 mm) round pole
Medium Fitter mates to nominal
Ø 2.4" (60 mm) round pole

Documentation

Warranty 5-year limited and Performance+ Service Warranty[†]

Agency listings cULus, DesignLights Consortium® (DLC)

Files available LM-79, LM-80, IES

Ordering information

Part number

Example: PML3-90M-53-WH-UL

PML3 - [] - 5 [] - [] - UL - []

Power/Size

Code	Desc.
200L	200 W, Large
160L	160 W, Large
120L	120 W, Large
90M	90 W, Medium
60M	60 W, Medium
40M	40 W, Medium
30M	30 W, Medium

Light distribution

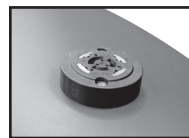
Code	Desc.
5	Type V
3	Type III

Body color

Code	Desc.
BZ	Bronze
SL	Silver
WH	White

Photocell Socket

Code	Desc.
PS	Photocell Socket
(Blank)	No Photocell Socket



Photocell Socket option
Includes shorting cap



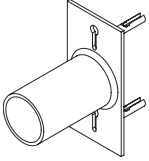
SloanLED[®]
A Principal Industries Company

PML3 Paladin

LED pole mount family for area lighting

Specifications

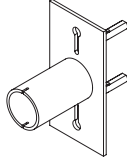
Accessories



3" Tenon Kit

Square poles and surface mount.

601100-BZ (Bronze)
601100-SL (Silver)
601100-WH (White)



2 3/8" Tenon Kit

Square poles

601102-CC-BZ (Bronze)
601102-CC-SL (Silver)
601102-CC-WH (White)

Round poles

601017-CC-BZ (Bronze)
601017-CC-SL (Silver)
601017-CC-WH (White)



**20 kVA
Surge Protector**
410185



Universal Photocell
401762

DISCONTINUED

SloanLED Headquarters

5725 Olivas Park Drive, Ventura, CA, USA
805.676.3200 • info@SloanLED.com

SloanLED Europe b.v.

Argonstraat 110, 2718 SN Zoetermeer, NL
+31 88 12 44 900 • europe@SloanLED.com



SloanLED.com

© 2023 SloanLED Rev C 2023-08-17



Visit product page for details.

Specifications subject to change without notice.



SloanLED[®]
A Principal Industries Company