

Pole Mount Light 2A

LED lighting system for parking areas

Pole Mount Light 2A is specifically designed to replace up to 400 W HID fixtures mounted on poles and walls in parking areas. The Type III distribution pattern is ideal for parking lots and customer traffic.

- Increases visibility at entrances, in the parking area, and along the property perimeter
- Mounts without requiring access inside the pole
- Photocell and motion sensor options available
- **Saves up to 80% energy compared with typical HID fixtures**

Slipfitter – Nominal 60 mm fitter for poles with existing tenons or pole top mounting

Power supply – 100 W, Class 3, 1-10 V dimming power supply runs at only 90 W for cool operation and long life

Progressive lens optics – Focuses light on task areas in a Type III radiation pattern while softly illuminating peripheral area for increased safety and security

Specifications

Electrical

Input voltage	100-277 VAC, 50-60 Hz
System power	90 W
System efficacy	107 lm/W
Inrush current	15 A
Photocell (optional)	Switches fixture on/off at dusk to dawn
Motion Sensor (optional)	Dims fixture to 30% after 2 minutes of inactivity

Lighting

Light output	9700 Lumens (nominal)
Light distribution	Type III
Color (CCT)	5000 K
Color rendering	70 CRI

Performance

Ingress Protection	IP66
IK Code	IK08
Operating temperature	-40°C to 50°C
Operating temperature for optional Motion Sensor	-20°C to 60°C
Life rating	100,000 hours (L ₇₀) ¹

Construction

Body	Extruded and die cast aluminum
Body colors	White, black, bronze, silver
Optics	Polycarbonate

Mounting

Adjustable slipfitter	Die cast aluminum fitter adjusts incrementally 12° up from horizontal and 90° down from horizontal
Pole top	Fitter mates to nominal Ø 60 mm round pole
Side mounting	Use appropriate tenon accessory for side mounting to a round or square pole

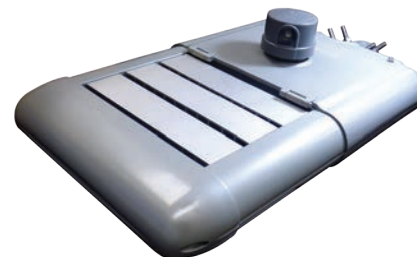
Documentation

Warranty	5-year limited
Agency listings	cULus, CE, EMC, Title 24 Compliant, DesignLights Consortium® (DLC), RoHS
Files available	LM-79, IES

¹ Based on LED component manufacturer data.

Exterior

Area Lighting



Project Name/Location

Part Number

Notes#

Date

 **SloanLED**[®]
Leaders in LED Technology
Lighting Systems

Ordering Information

Example: 701955-5WXAX2

701955 — 5W A 2

Body Color

Code	Description
S	Silver
W	White
B	Black
Z	Bronze

Dimming

Code	Description
X	No Sensor
M	Motion Sensor
B	Motion Sensor and Photocell Socket

Photocell Accessories

Description	Part Number
Photocell Socket Kit	601053
Universal Photocell	401762

Tenon, Horizontal Single Mount (Accessory)

601 — — —

Pole Type

Code	Description
102	Square
017	Round

Body Color

Code	Description
BK	Black
SL	Silver
WT	White
BR	Bronze

Length

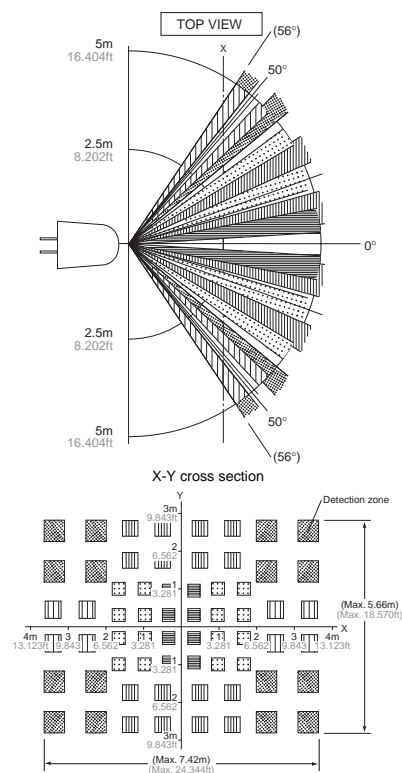
Code	Description
	Standard
L	Long ²

² Required for 90° adjacent mounting.

Diameter (round only)

Code	Description
3.0	75 mm

Motion Sensor Performance



- Notes:
1. The X-Y cross-sectional diagram shows detection area.
 2. The differences in detection zone patterns are indicative of projections of 16 lenses with single focal point and with five optical axes. An object will be detected if it crosses inside detection zone and its temperature differs from background temperature.

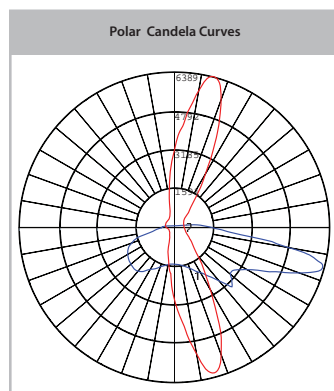
Motion Sensor



Photocell



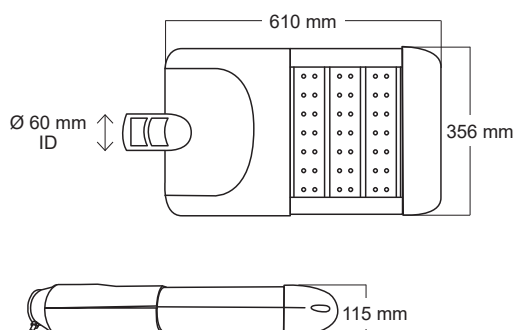
Photometrics



■ (1) Vertical Plane ■ (2) Horizontal Cone

Dimensions

weight = 9 kg



**Tenon
Square
Pole or
Wall Mount**

**Tenon
Round Pole**

