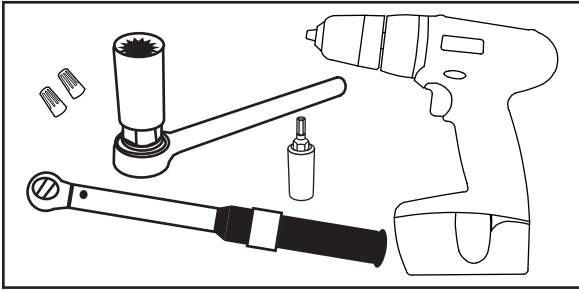


# Pole Mount Light 2B

## Installation Guide for 701955-5WCBX2



**Tools and supplies required:** Cordless drill, 13 mm drill bit, ratchet, 6 mm hex bit and socket, torque wrench with capacity above 100 in\*lb/12 N\*m, and twist-on or push-in UL Listed wire connectors for 14/18 AWG.

### NOTE:

Installation to 60 mm pole does not require tenon accessory.

Installation to poles larger than 60 mm, square poles or horizontal/multiple mounting will require appropriate tenon adapter.

**NOTE:** SloanLED requires this fixture be installed on a Daylight Sensor or Timer Circuit that switches off during daylight hours to maximize energy savings and extend product life. Required for California Title 24 Compliance.

**NOTE:** The light source of this luminaire is not replaceable; when light source reaches end of life, the whole luminaire shall be replaced.

**CAUTION, risk of electric shock**



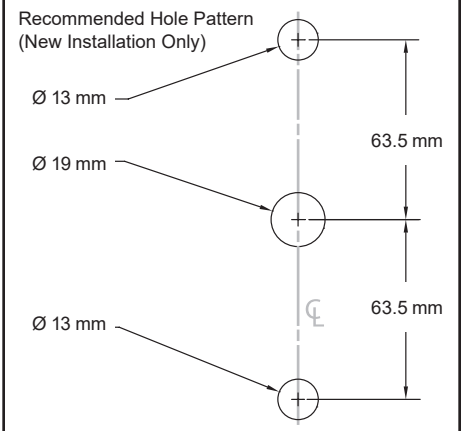
## Preparation for Installation

**NOTE:** Prior to commencing work, a licensed electrician must lockout and tagout all associated breakers or switches as required by local electrical code.

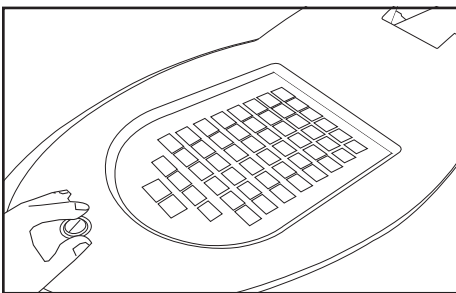
**New Installation:** Mark and drill 13 mm diameter holes in pole at desired height with wire pass-through in center of hole pattern. Use tenon as a guide for desired hole location (refer to Recommended Hole Pattern diagram to the right).

**Replacement/Retrofit Installation:** Disconnect wiring from old fixture and remove fixture from pole. Tenon Accessory Kit (P/N 601102) is designed to work with a variety of existing hole patterns. Mark and drill 13 mm diameter holes as required for hole patterns not compatible with Tenon Accessory Kit.

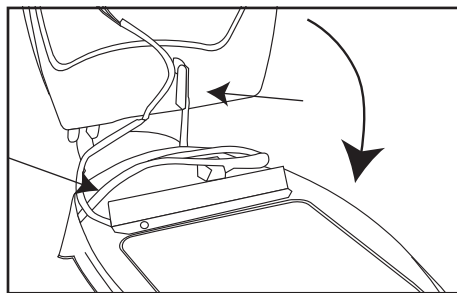
**WARNING: THE INSTALLER IS RESPONSIBLE FOR SUPPORTING THE LUMINAIRE DURING A RETROFIT INSTALLATION.**



## Opening and Closing the Luminaire

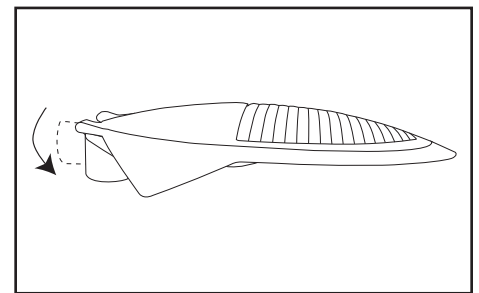


1. Opening – Unscrew locking bolt (bolt cannot be fully removed from lower housing). When free, turn luminaire back and lift the top housing up from the front. Housing parts are hinged at the back. Engage locking arm.



2. Closing – Disengage locking arm. Ensure internal cabling doesn't get pinched. Close luminaire. Tighten locking bolt.

## Rotating the Slipfitter

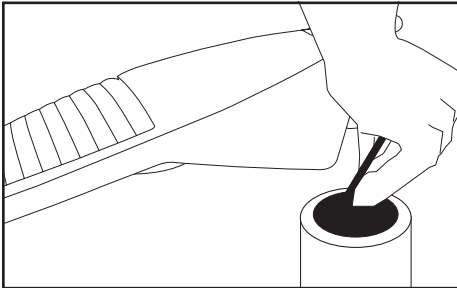


1. Follow steps for "**Opening and Closing the Luminaire**". Remove bolts and washers from slipfitter. Rotate slipfitter down 90°. Replace and tighten bolts and washers.

# Pole Mount Light 2B

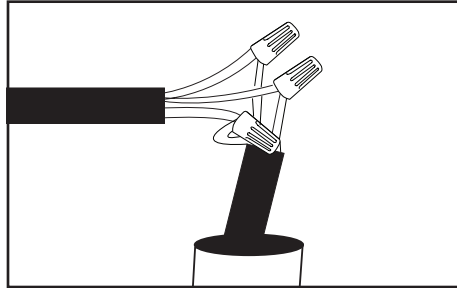
## Installation Guide for 701955-5WCBX2

### New/Replacement Installation (Ø 60 mm Bare Round Pole) – Vertical Mount



1. First, follow the instructions on **Opening and Closing the Luminaire** and the instructions on **Rotating the Slipfitter** (page 1).

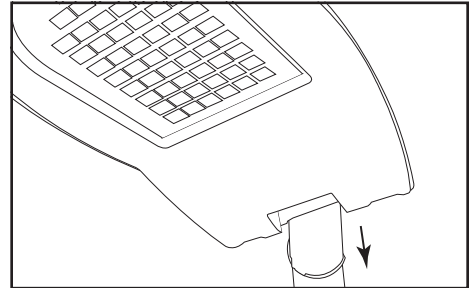
**NOTE:** If pole diameter is larger than Ø 60 mm, use a top mount tenon (sold separately).



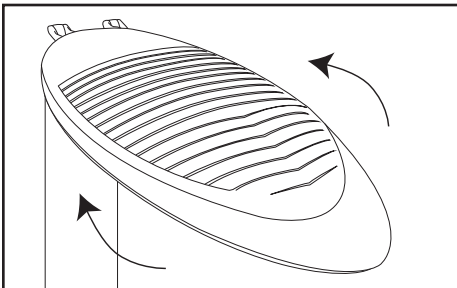
**NOTE:** As required by local electrical code, have a licensed electrician complete Step 2.

2. Attach main branch wiring exiting pole to luminaire harness. Pole Mount Light 2B power supply input wire colors are as follows:

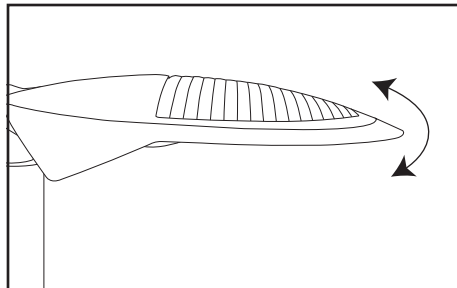
Line – Brown  
Neutral – Blue  
Ground – Green/Yellow



3. Lift luminaire, align slipfitter and pole. Insert wire connections/bundle into luminaire tube. Excess wire may be inserted into tenon. Slide slipfitter onto pole. Tighten 4 mm set screws to 100 in\*lb./12 N\*m.



4. If orientation requires adjustment, lockout and tagout primary power and reposition light by loosening 4 mm setscrews on slipfitter.



5. Make minor tilt adjustment as necessary by loosening socket head cap screws (6 mm hex).



6. **Final Installation Check:** Check operation and desired orientation upon energizing power.

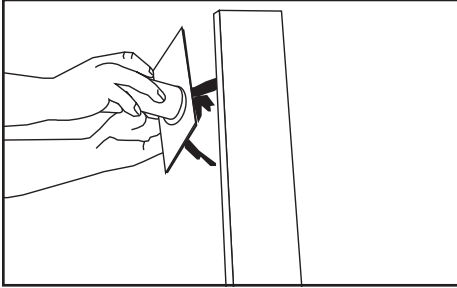
# Pole Mount Light 2B

## Installation Guide for 701955-5WCBX2

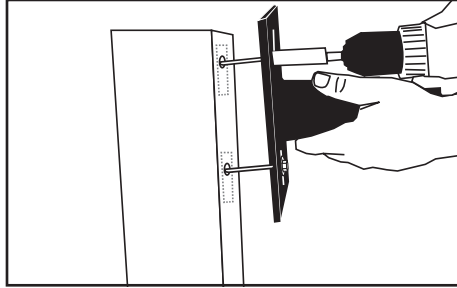
### New/Replacement Installation – Horizontal Mount/Factory Configuration

**Bare square pole mounting requires tenon accessory**

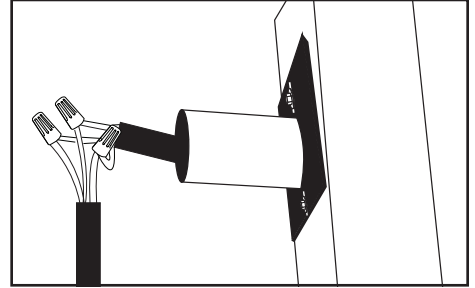
**Mounting to existing Ø 60 mm tenon – Begin at Step 3**



1. To install Tenon Accessory Kit, loosen ¼-20 nuts for attachment bolts approximately 4 turns and orient toggle on bolt centerline. Feed incoming AC power wires (Line, Neutral, Ground) through center of tenon. Keeping toggles oriented to bolt centerlines, insert both toggles into pole until flange of tenon contacts pole. Ensure slot for center tube of tenon is oriented to 6 O'clock position.



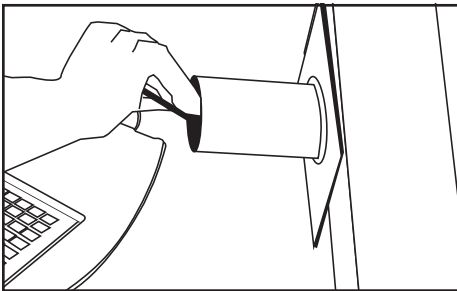
2. Rotate bolts so that toggles turn inside pole and fall into vertical orientation. Bolts can be tightened easily by pulling on tenon as shown. Tighten bolts to bring toggles into internal contact with pole and tighten to 100 in\*lb/12 N\*m torque.



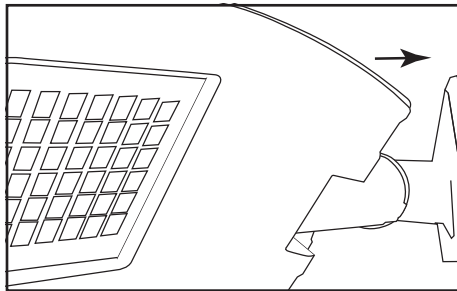
**NOTE:** As required by local electrical code, have a licensed electrician complete Step 3.

3. Attach main branch wiring exiting pole to luminaire harness. Pole Mount Light 2B power supply input wire colors are as follows:

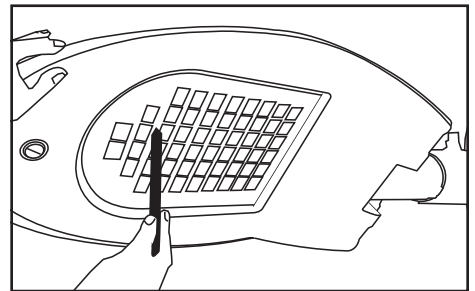
Line – Brown  
Neutral – Blue  
Ground – Green/Yellow



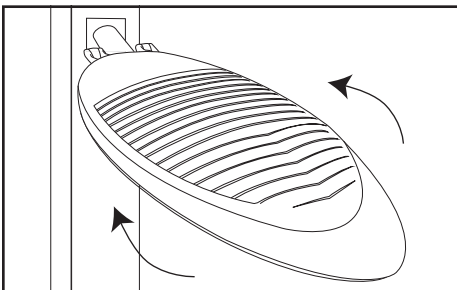
4. Insert wire connections/bundle into luminaire tube. Excess wire may be inserted into tenon.



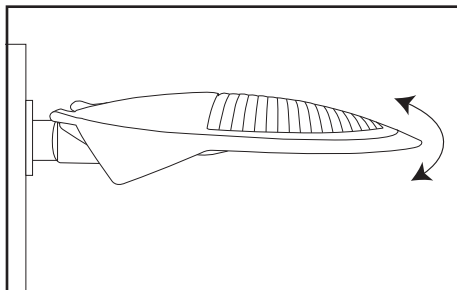
5. Lift luminaire, align slipfitter and tenon. Slide slipfitter onto tenon.



6. Orient light on tenon at desired angle. Most applications will have luminaire oriented horizontally. Rotate luminaire as desired. Tighten 4 mm hex set screws to 100 in\*lb/12 N\*m.



7. If orientation requires further adjustment, lockout and tagout primary power and reposition light by loosening 4 mm setscrews on slipfitter.



8. Make minor tilt adjustment as necessary by loosening socket head cap screws (6 mm hex).



9. **Final Installation Check:** Check operation and desired orientation upon energizing power.

# Pole Mount Light 2B

## Installation Guide for 701955-5WCBX2

### 36 VDC power supply capacity chart for Pole Mount Light 2B

Part number	Input		Output		
	Nominal input voltage	Input current	Power output	Output current	Luminaire per power supply
410157-075	100-277 VAC	1.0 A / 0.5 A	75 W Max	350 mA	1

### Optional Accessories

Part number	Part name	Application
601102	Square Pole Tenon Kit	Required for horizontal mounting onto a bare square pole.
601017	Round Pole Tenon Kit	Required for horizontal mounting onto a bare round pole.

### Troubleshooting

**NOTE:** A licensed electrician should perform all applicable steps.

<b>Light does not turn on.</b>	<ol style="list-style-type: none"><li>1. Ensure all safety tags and lockouts removed. Ensure all breakers and local switches energized.</li><li>2. Check light circuit for motion dimming, daylight sensing, or other timed/motion/daylight circuit. Check respective manufacturer's guide for proper operation.</li><li>3. Ensure no loose connections in main branch wiring. Ensure proper wiring configuration for Line, Neutral, and Ground.</li><li>4. Check connection from power supply lead to luminaire. Open luminaire cover and verify all wire connections are properly made.</li><li>5. If power supply is getting primary power, has correct output, and luminaire does not light, there may be a short in secondary wiring. Check all connections and condition of wires. Measure luminaire input resistance across red and black leads. This should be an open circuit on typical handheld multimeters. Any positive reading indicates short within luminaire. Replace luminaire.</li></ol>
--------------------------------	---