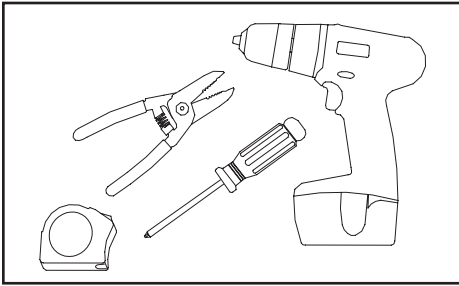
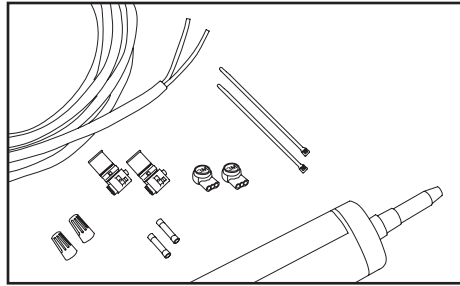


SloanLED SE

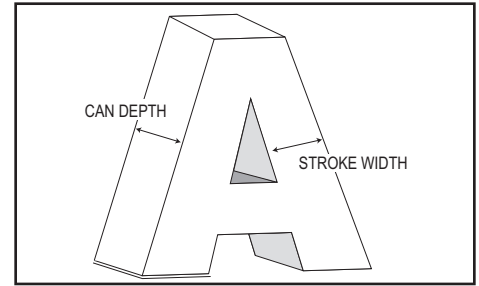
Installation Guide for 701269-6WSK1-MB



1. **Recommended tools:**
Measuring tape, wire strippers.
Optional: drill, screwdriver.

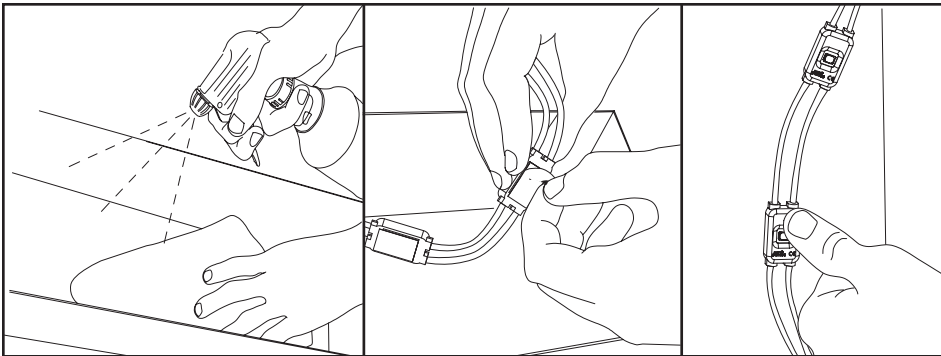


2. **Recommended supplies:** PLTC cable, wire nuts, IDC connectors or butt splices with appropriate safety agency markings, and cable ties. **Optional:** screws and silicone.

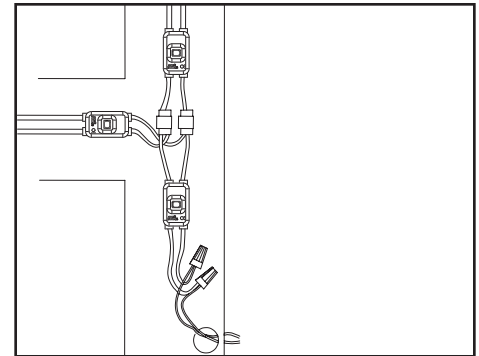


3. **Layout:** To populate sign, refer to density guidelines, test, or contact your representative for recommendations.

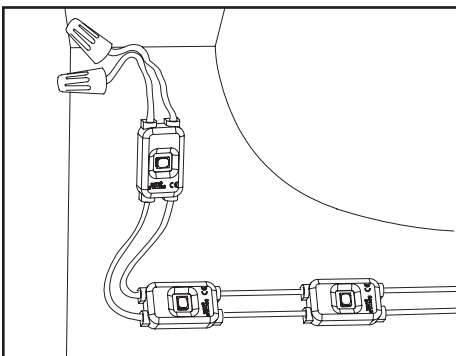
Note: Modules must be mounted in an enclosed sign cabinet/box.
This product is not suitable for immersion or direct exposure to water for extended periods of time.



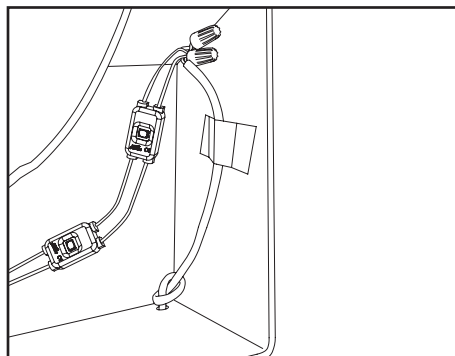
4. **Peel and stick:** Clean inside sign with rubbing alcohol and allow to dry. Using predetermined layout and LED placement from Step 3, remove tape backing and stick modules into place. Ensure modules are firmly attached. **CAUTION:** When handling modules, avoid pressing down directly on top of LEDs.



5. **Connections:** Modules may be connected in series or parallel.



6. **Cap all unused wires:** The strand of modules should not be looped to create a closed circuit.



7. **Connect power supply to first module on string:** See Power Supply Install Guide for more information regarding power supply installation.

WARNING: Connect Red striped wire of LED modules (+) to Red wire of power supply (+). Connect White wire of LED modules (-) to Black wire of power supply (-). Reverse polarity connections may damage LEDs and will void product warranty.

SloanLED SE

Installation Guide for 701269-6WSK1-MB

12 VDC Power Supply capacity table for 701269-6WSK1-MB

Power Supply	Part Number	Input		Output		Maximum feet (meter)/Modules Standard
		Nominal Input Voltage	Input Current	Power Output	Output Current	
Self-Contained 20 W	701680	100-240 V	0.55 A	20 W	1.5 A	16.8 (5.1)/42
Compact 12/25 W	410174	100-277 V	0.40 A	25 W	1.9 A	21.2 (6.5)/53
60C1 60 W	701507-60C1	100-277 V	0.80 A	60 W	4.5 A	50 (15.2)/125
60W1 60 W	701507-60W1	100-240 V	0.85 A			
60W2 60 W	701507-60W2	100-277 V	0.80 A			
MODW(E) 60 W	701507-MODW(E)	100-240 V	1.00 A			
MOD277 60 W	701507-MOD277	277-347 V	0.50 A			
120D1 120 W	701507-120D1	100-277 V	1.70 A	2 × 60 W	2 × 4.5 A	2 × 50 (15.2)/125
Power used per foot (meter) in Watts						1.08 W (3.54)

NOTE: Each 12 V circuit must be limited to 5 A (60 W) or less. For North American installations, a power supply that meets NEC Class 2 specifications is required.

Extension of Power Supply Leads

An extension can be used if longer lead wire from power supply to LED modules is needed. Extension should be kept as short as possible: under 15 ft for 18 AWG UL Listed PLTC or under 50 ft for 14 AWG UL Listed PLTC (4.6 m for 1 mm² or under 15.2 m for 2.5 mm²).

Troubleshooting

Entire sign or leg does not light after complete installation.	Check connection from power supply lead to first lamp. Make sure polarity of connections made at power supply lead and any jumper wire is correct. Power supply outputs should be connected RED-TO-RED STRIPED (+) and BLACK-TO-WHITE (-).
Still does not light.	Check output voltage of power supply using a voltmeter. The output voltage should be DC 12.0 V ± 0.5 V. If there is no output voltage, have a licensed electrician check input voltage. Make sure power supply is connected correctly and getting primary power. If power supply is connected properly and getting primary power and there is still no output voltage, try a different power supply.
Still does not light.	If power supply is getting primary power and modules don't light, there may be a short in secondary wiring. Check all connections and cap all loose wires.
The beginning of a leg lights, but entire leg does not light or lights intermittently.	The primary cause of a portion of a 701269-6WSK1-MB leg not lighting or lighting intermittently is a bad connection or reverse polarity connection between modules that light and modules that don't light. Check this connection.
One module does not light, but all others in the leg light.	Modules are designed that if one module fails, it will not cause entire sign or leg to go out. If one module does not light, but all others in leg do, replace this module with a new one.



Use the online SloanLED Layout Estimator to get a quick SloanLED SE design and material estimate for your sign. Visit product page for details.

Customer service and technical support

888.747.4LED (888.747.4533)

SloanLED.com • info@SloanLED.com

P/N 401928 Rev C 2018-02-20

Europe: Customer service and technical support

+31 88 12 44 900

SloanLED.com • Europe@SloanLED.com

