

V180

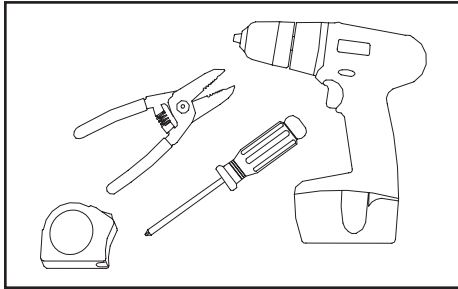
Installation Guide for 701269-WLP2-MB, 701269-6WMG2-MB, 701269-(X)WSG1-MB, 701269-(X)WLG1-MB, 701269-(X)WLG2-MB

WARNING: Risk of electrical shock. New installation and LED Retrofit Kit installation requires knowledge of sign electrical systems. If not qualified, do not attempt installation. Contact a qualified electrician. Follow all NEC and local codes. V180 is not suitable for submersion or direct exposure to water for extended periods of time.

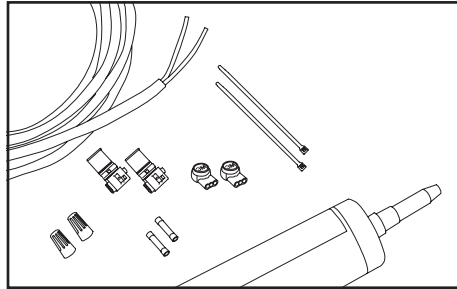
AVERTISSEMENT: Risque de choc électrique. La nouvelle installation et l'installation du kit de modification à LED nécessitent la connaissance des systèmes électriques de signalisation. Si non qualifié, ne tentez pas l'installation. Contactez un électricien qualifié. Suivez tous les codes NEC et locaux. V180 ne convient pas à la submersion ni à l'exposition directe à l'eau pendant de longues périodes.

For New Installation, proceed with Step 1 below. For Retrofit Installations, begin with Retrofit Instructions on page 2.

New Installation

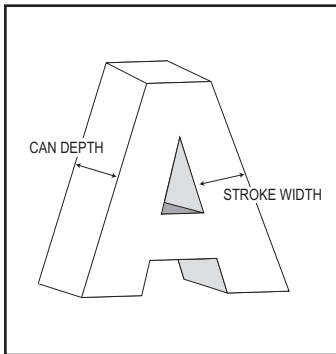


1. **Tools required:** Measuring tape, wire strippers. Optional: Drill, screwdriver.

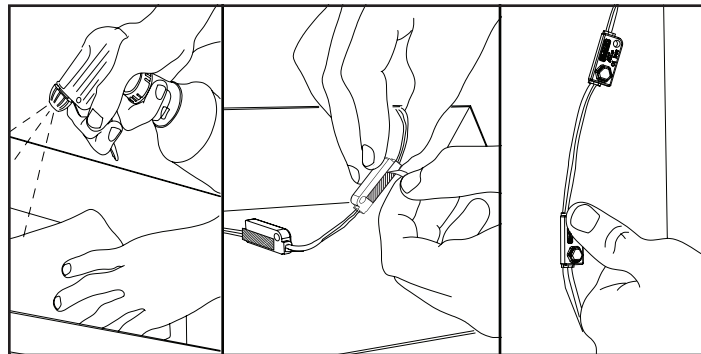


2. Components list:

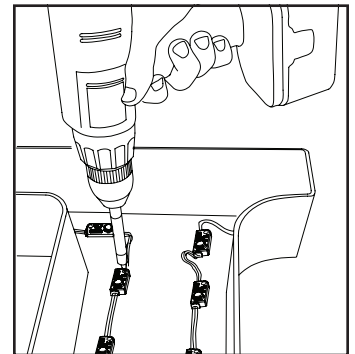
- V180 modules, model numbers 701269-WLP2-MB, 701269-6WMG2-MB, 701269-(X)WSG1-MB, 701269-(X)WLG1-MB, or 701269-(X)WLG2-MB
- SloanLED 12 V Class 2 output power supply (refer to "**SloanLED Power Supply Guide for Sign Products**" for appropriate 12 V power supply models)
- UL approved 18 AWG or larger diameter supply wire
- UL approved wire connectors appropriate for wire gauge used
- Optional for mounting: Electrical grade silicone, #6 (M3) sheet metal screws, or 1/8" (3 mm) aluminum rivets



3. **Layout:** To populate sign, refer to V180 density guidelines to determine appropriate number of modules and power supplies.

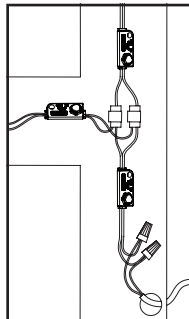


4. **Peel and stick:** Clean inside sign with rubbing alcohol and allow to dry. Using predetermined layout and LED placement from Step 3, remove tape backing and stick modules into place. Ensure modules are firmly attached. **CAUTION: When handling modules, avoid pressing down directly on top of LEDs. ATTENTION: lorsque vous manipulez des modules, évitez d'appuyer directement sur le dessus des voyants.**

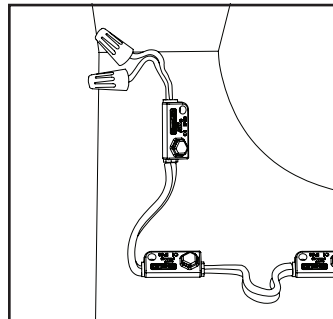


5. **Fasteners:** If desired, modules can be secured with #6 (3.5 mm) pan head sheet metal screws or 1/8" (3 mm) aluminum rivets.

NOTE: Modules must be mounted in an enclosed sign. This product is not suitable for immersion or direct exposure to water for extended periods of time.

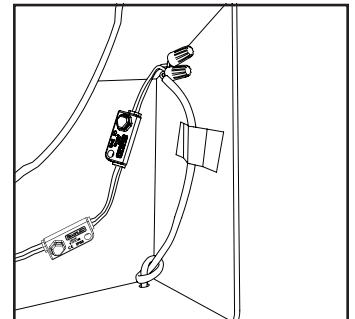


WARNING: Check Polarity: All connections must be RED-TO-RED (+) and BLACK-TO-BLACK (-). Reverse polarity connections may damage the LEDs and will void product warranty. **ATTENTION:** Vérifiez la polarité: toutes les connexions doivent être ROUGE-ROUGE (+) et NOIR-NOIR (-). Des connexions inversées peuvent endommager les DEL et annuler la garantie du produit.



6. **Connections:** Modules may be connected in series or parallel.

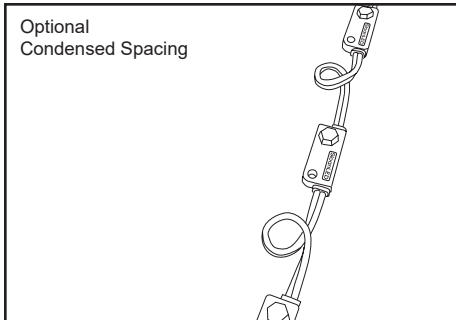
7. **Cap all unused wires:** The strand of modules should not be looped to create a closed circuit.



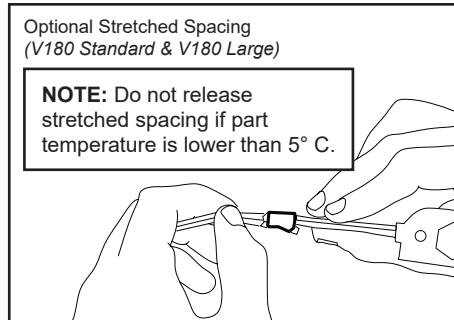
8. **Connect power supply to first module on string:** See power supply install guide for more information.

V180

Installation Guide for 701269-WLP2-MB, 701269-6WVG2-MB, 701269-(X)WSG1-MB, 701269-(X)WLG1-MB, 701269-(X)WLG2-MB



Optional condensed spacing: If sign requires modules to be condensed from natural wire spacing, loop wires as shown to avoid wires creating shadows on sign face.



Optional stretched spacing: If desired, module spacing for V180 Standard and V180 Large can be extended. To release stretched spacing, grip wire between modules (do not pull on modules) and gently pull apart releasing extra wire.

Retrofit Instructions for Existing Signs



GENERAL PURPOSE
RETROFIT SIGN CONVERSION.
FOR USE ONLY IN ACCORDANCE
WITH KIT INSTRUCTIONS.

KIT IS COMPLETE ONLY WHEN ALL PARTS
REQUIRED BY THE INSTRUCTIONS ARE PRESENT.

WARNING: Risk of fire or electric shock. Install this kit only in host signs that have been identified in the installation instructions, and where the input rating of the retrofit kit does not exceed the input rating of the sign. Installation of this LED retrofit kit may involve drilling or punching of holes into the structure of the sign. Check for enclosed wiring and components to avoid damage to wiring and electrical parts. **AVERTISSEMENT:** Risque d'incendie ou de choc électrique. Installez ce kit uniquement sur les panneaux hôtes identifiés dans les instructions d'installation et dans lesquels les caractéristiques nominales d'entrée du kit de modification ne dépassent pas celles du panneau. L'installation de ce kit d'amélioration des LED peut impliquer de percer ou de percer des trous dans la structure de l'enseigne. Vérifiez le câblage et les composants inclus pour éviter d'endommager le câblage et les pièces électriques.

1. Identify sign to be retrofit and ensure branch circuit supplying existing sign are within voltage range for LED power supply. Refer to components list (page 1) and "12 VDC Power Supply Capacity Chart" (page 3).
2. Remove existing lighting equipment intended to be replaced, such as neon or fluorescent, and all power supplies, transformers, or ballasts. Remove existing neon and all standoffs to leave an empty channel letter can. **NOTE:** All materials removed must be disposed of in accordance with applicable local, state, and federal laws.
3. If required by local, state, or national electrical code, install a new disconnect switch.
4. Determine suitability and structural integrity of existing sign after removal of existing lighting equipment. If retrofit does not require the making of any new holes, do not make or alter any open holes in an enclosure of wiring or electrical components during kit installation. If existing holes are present in a wet or outdoor location sign, repair and seal any unused openings in the electrical enclosure. Openings greater than 0.5" (12.7 mm) diameter require a metal patch secured by screws or rivets and caulked with non-hardening caulk. Smaller openings may be sealed with non-hardening caulk.
5. Clean inside of sign using non-oil based cleaner. Follow all manufacturer's instructions and ensure inside of sign is dry before proceeding with installation. This is an important step for good adhesion of SloanLED channel letter module mounting tape.
6. To populate sign, refer to V180 density guidelines as well as power supply capacity chart (page 3) to determine appropriate number of modules and power supplies. A list of acceptable power supply models is shown in the supplemental "**SloanLED Power Supply Guide for Sign Products**".
7. Follow all instructions on pages 1 and 2 under "New Installation" to properly install LED modules.
8. Connect modules to power supply output as shown on page 1 under "New Installation".
9. Connect power supply input as outlined in power supply installation guide in accordance with local, state and national electrical codes by qualified personnel. Refer to power supply install guide included with power supply for details.
10. If required, install disconnect switch in accordance with local, state and national electrical codes by qualified personnel.

V180

Installation Guide for 701269-WLP2-MB, 701269-6WMG2-MB, 701269-(X)WSG1-MB, 701269-(X)WLG1-MB, 701269-(X)WLG2-MB

12 VDC Power Supply Capacity Chart

Power output	Maximum feet (meters) / modules			
	V180 Mini	V180 HB Mini	V180 Standard (unstretched spacing)	V180 Large (unstretched spacing)
20 W	23 (7.0)/57 modules	15 (4.7)/30 modules	12.8 (3.9)/32 modules	7.5 (2.3)/15 modules
25 W (EU/ROW ONLY)	29 (8.8)/73 modules	19 (5.8)/38 modules	16.4 (5.0)/41 modules	9.5 (2.9)/19 modules
30 W (EU/ROW ONLY)	35.2 (10.7)/88 modules	22.5 (6.9)/45 modules	19.6 (6.0)/49 modules	11.5 (3.5)/23 modules
60 W	69 (21.0)/173 modules	46 (14.0)/92 modules	39.2 (11.9)/98 modules	22.5 (6.9)/45 modules
2 × 60 W	2 × 69 (21.0)/173 modules	2 × 46 (14.0)/92 modules	2 × 39.2 (11.9)/98 modules	2 × 22.5 (6.9)/45 modules
2 × 75 W [*] (EU/ROW ONLY)	2 × 86.4 (26.3)/216 modules	2 × 57.5 (17.5)/115 modules	2 × 48.8 (14.9)/122 modules	2 × 28 (8.5)/56 modules
100 W [*] (EU/ROW ONLY)	116.0 (35.4)/290 modules	76.5 (23.3)/153 modules	65.6 (20.0)/164 modules	37.5 (11.4)/75 modules
Power used per ft (m) in watts	0.78 W (2.56)	1.18 W (3.87)	1.38 W (4.53)	2.4 W (7.88)

* Must split load at power supply output to prevent exceeding maximum wire/module ampacity of 5A per single leg.

Capacities based on 90% of power supply output.

NOTE: Refer to "SloanLED Power Supply Guide for Sign Products" for appropriate 12 V power supply models.

Extension of Power Supply Leads

If longer lead wire from power supply to LED modules is needed, an extension can be used. Extension should be kept as short as possible, i.e., under 15 ft for 18 AWG UL Listed PLTC (4.6 m for 1 mm² PLTC) or under 50 ft for 14 AWG UL Listed PLTC (15.2 m for 2.5 mm² PLTC).

Troubleshooting

NOTE: A licensed electrician should perform all applicable steps.	
Entire sign or leg does not light after complete installation	Check connection from power supply lead to first module. Make sure polarity of connections made at power supply lead and any jumper wire is correct. Power supply outputs should be connected RED-TO-RED and BLACK-TO-BLACK.
Still does not light	Check output voltage of power supply using a voltmeter. The output voltage should be DC 12.0 V ± 0.5 V. If there is no output voltage, have a licensed electrician check input voltage. Make sure power supply is connected correctly and getting primary power. If power supply is connected properly and getting primary power and there is still no output voltage, try a different power supply.
Still does not light	If power supply is getting primary power and modules don't light, there may be a short in the secondary wiring. Check all connections and cap all loose wires.
The beginning of a leg lights, but entire leg does not light or lights intermittently	The primary cause of a portion of a V180 leg not lighting or lighting intermittently is a bad connection or reverse polarity connection between modules that light and modules that don't light. Check this connection.
One module does not light, but all others in the leg light	V180 is designed so if one module fails, it will not cause the entire sign or leg to go out. If one module does not light, but all others in the leg do, replace this module with a new one.

V180 is covered by US patent 6,932,495 and US and foreign patents pending.



Scan QR code to
download SloanLED
Power Supply Guide
for Sign Products



<https://sloanled.com/PowerSupplyGuideForSignProducts>

Customer service and technical support

SloanLED Headquarters

5725 Olivas Park Drive, Ventura, CA, USA

888.747.4LED (888.747.4533) • info@SloanLED.com

SloanLED.com

SloanLED Europe b.v.

Argonstraat 110, 2718 SN Zoetermeer, NL

+31 88 12 44 900 • Europe@SloanLED.com



SloanLED®
Leaders in LED Technology