

The **complete solution** for all your lighting needs.

Product Catalog

BORDER TUBING | CHANNEL LETTER | SIGN CABINET/BOX | LINEAR LIGHTING



POWER SUPPLIES | OUTDOOR COMMERCIAL | REFRIGERATED DISPLAY

# Brightening Your Brands from the Beginning.

Founded in 1957 to design and develop high-reliability lighting products, SloanLED® quickly became a pioneer in LED technology. Our founder, Charles Sloan, was driven by two simple principles: employ the latest technologies to develop quality lighting products and take excellent care of our customers.

SloanLED has continued to deliver on these principles as a leading supplier of aircraft indicator lights for the last 65 years, and our commitment to producing safe, reliable, lighting solutions that withstand the elements and harshest weather conditions, keeps us at the forefront of the lighting market. Our high-efficiency, long lasting solutions don't just brighten your brands; they represent significant energy cost reductions, maintenance cost savings, easy installation, faster ROI, and deliver exceptional performance with consistent brightness and uniformity.



**1957**

Company founded  
by Charles Sloan

**1979**

Pioneers in  
LED technology

**1999**

SloanLED enters  
spa market

**2003**

SloanLED introduces  
Constant Current Technology

**2011**

SloanLED enters  
petroleum & c-store markets

**2018**

SloanLED acquires  
Litecorr

**1968**

Company begins early  
work with U.S. military

**1997**

First national  
signage program

**2000**

ChannelLED  
introduced

**2004**

Patent issued to  
SloanLED for LEDStripe®

**2012**

50,000,000 feet of  
SloanLED product sold

**2057**

Celebrate 100-year  
anniversary

## Innovation

We design, test, and deliver comprehensive solutions that factor in total cost of ownership, maximum ROI, and a positive customer experience.

- Reliable, dependable products
- Lowest total cost of ownership
- Reduced maintenance costs
- Fast, easy installation

## Quality

We're a proven industry leader with 65 years experience producing safe, reliable lighting solutions.

- ISO 9001:2015 certification for quality management
- Superior product lifespans
- LM79 product testing
- Experienced and proven industry leader

## Reliability

We use only the highest caliber components for long lasting lighting solutions that deliver exceptional performance.

- Extreme environmental and product-life testing
- Virtually maintenance free
- Long life products, up to 100,000 hours

## Sustainability

Our lighting solutions represent significant energy cost reductions, easy installation, faster ROI, and unsurpassed value.

- Significant energy cost savings
- Recycled/recyclable packaging materials
- Mercury free illumination
- Standardized low-voltage systems



# Quick Reference Guide

## Border Tubing.....Pg. 4-5

Border tubing and accent LED lighting allows for creative sign solutions. SloanLED offers three LED tubing solutions to fit your application.

## Channel Letter .....Pg. 6-11

SloanLED channel letter LED lighting products are designed for a wide range of channel letter applications, including face and halo lit, shallow to deep can depths, and routed acrylic letters.

Product	Desired can depth									
	1"	2"	3"	4"	5"	6"	7"	8"	9"+	
SloanLED Prism <sup>24</sup> , Prism <sup>24</sup> LP, and Prism <sup>12</sup>										12/24 VDC
SloanLED Prism <sup>24</sup> Mini and Prism <sup>12</sup> Mini										12/24 VDC
SloanLED Prism <sup>24</sup> HO										12/24 VDC
SloanLED Prism <sup>12</sup> Nano+										12 VDC
VL4										12 VDC
VL4 Mini										12 VDC
VL4 HO and VL4 Super HO										12/24 VDC
SloanLED FlexTAPE										12 VDC

## Sign Cabinet/Box.....Pg. 12-14

Sign cabinet/box LED lighting from SloanLED is designed for single and double sided and narrow to large box and cloud signs. It's easy to install and is a great solution for new and retrofit applications.

## Linear Lighting.....Pg. 15-16

Linear lighting is a great solution for illuminating cove, awning, and wall wash applications or to highlight non-illuminated signs.

## Power Supplies .....Pg. 17

SloanLED power supplies are engineered to last and are among the most rugged in their class.

## Outdoor Commercial .....Pg. 18-19

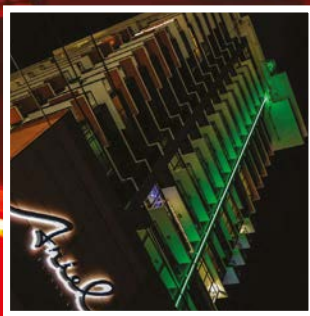
SloanLED outdoor area LED lighting systems capture customer attention with consistent and bright illumination, in addition to providing sizeable energy savings over non-LED fixtures.

## Refrigerated Display .....Pg. 20-21

SloanLED refrigerated display LED lighting systems use cutting edge LED technology to combine efficiency, performance, and value for state of the art merchandising.

# Border Tubing & Accent

Border tubing and accent LED lighting allows for creative sign solutions. SloanLED proudly offers three LED tubing solutions to fit your application. We bring more than 20 years of experience in designing and manufacturing high performance, reliable, long-lasting LED border tube products. Successful brands, who mean business, choose SloanLED.



## ColorLINE

Neon-inspired tubing

Add stunning neon-like appeal and increased awareness to any building with this patented LED-based rigid tubing system. Completely assembled and sealed tubes are ready for installation. ColorLINE offers our brightest tubing light output, a neon-like profile, and innovative lit, mitered corners.

- Daytime color when non-illuminated
- Slim profile similar to standard neon
- High impact acrylic: UV stable, hydrocarbon insensitive, and non-fading
- Product can be cut to custom lengths in the field

**12  
VDC**



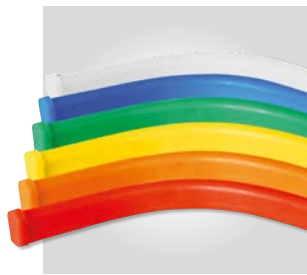
## FlexiBRITE<sup>24</sup>

Flexible LED tubing

FlexiBRITE<sup>24</sup> is a next-generation flexible LED lighting solution that adds neon appeal with 24 VDC to any LED-lit sign. Featuring an improved design that builds on all we've learned over 15+ years with FlexiBRITE 12 VDC for outstanding durability and more product per power supply, FlexiBRITE<sup>24</sup> lets your creativity shine!

- Field-bendable and field-cuttable to custom lengths, giving installers the freedom to create an endless array of profiles, contours, and patterns on the fly
- Daytime color when non-illuminated
- Up to 32.8 ft per 100 W 24 VDC power supply

**24  
VDC**



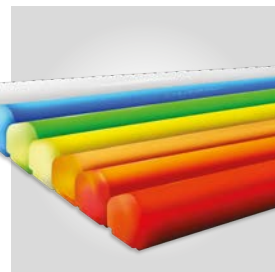
## LEDStripe 24V

Large-profile LED tubing

LEDStripe<sup>®</sup> 24V LED-based rigid tubing system adds elegance and distinction to any building and has become the border tube system of choice for many retail, restaurant, and lodging chains.

- Daytime color when non-illuminated
- High impact acrylic: UV stable, hydrocarbon insensitive, and non-fading
- Product can be cut to custom lengths in the field

**24  
VDC**



## SloanLED FlexTAPE

Flexible LED illumination for shallow signs and accents

Low-profile, LED lighting solution that delivers flexibility and fast, easy installation in shallow channel letter and architectural accent applications.

- Available in White (6500 K, 5000 K, 3500 K) and Red
- Easy installation with peel-n-stick back
- Can be cut in 2" (50 mm) segments for zero waste

**12  
VDC**





Colors	Part number*	Lengths	Length code	Approx. cut increments	Power per ft/m	Protection class	Power capacity	Mounting
ColorLINE								
Red	701800D-R-X	2-ft (0.6-m) Tube	2	2.4 in (60 mm)	2.28 W / 7.5 W	IP66	24 ft (7.3 m) per 60 W 12 VDC power supply	Dual-position mounting clips (400381-25) orient in two directions
Orange	701800D-O-X							
Yellow	701800D-Y-X	4-ft (1.2-m) Tube	4					
Green	701800D-G-X							
Blue	701800D-B-X	6-ft (1.8-m) Tube	6					
White (6500 K)	701800-W-X	8-ft (2.4-m) Tube	8					
Warm White (3500 K)	701800A-WW-X							

#### FlexiBRITE<sup>24</sup>

Ruby Red	701499E-R-X	5-ft (1.5-m)	5	2" (50 mm)	2.7 W / 9.0 W	IP66	32.8 ft (10.0 m) per 100 W 24 VDC power supply	Mounting clips: (402888-25) Mounting track: (402889-10)
Citrus Orange	701499E-O-X							
Noviol Gold	701499E-Y-X							
Emerald Green	701499E-G-X	20-ft (6.0-m)	20					
Bromo Blue	701499E-B-X							
Snow White	701499E-W-X							

#### LEDStripe 24V

Red	701189-XH	1-ft (0.3-m) Tube <sup>†</sup>	1	1 in (25 mm)	1.5 W / 5.0 W (except 1-ft [0.3-m] piece at 3.0 W on average)	IP66	60 ft (18.3 m) per 100 W 24 VDC power supply	Round pre-mounting buttons: 701156 Slide and mount rectangle mounting buttons: 400775
Orange	701189-A-XD	2-ft (0.6-m) Tube	2	3 in (75 mm)				
Amber	701189-Y-XD	4-ft (1.2-m) Tube	4					
True Yellow	701189-YT-X	6-ft (1.8-m) Tube	6					
Green	701189D-G-XD	8-ft (2.4-m) Tube	8					
Blue	701189A-B-XD	10-ft (3.0-m) Tube	10					
White	701189E-W-X							
Lemon Yellow <sup>†</sup>	701189E-WY-X							

#### ColorLINE Accessories

Joint and corner covers		
Snap-on, frosted joint covers (701807) for clean finish illuminated mitered corners:		
Red, Orange, Yellow, Green, Blue	Inside corner	701800D-IC-Color
	Outside corner	701800D-OC-Color
	Step corner	701800D-SC-Color
White (6500 K)	Inside corner	701800-IC-W
	Outside corner	701800-OC-W
	Step corner	701800-SC-W
Warm White (3500 K)	Inside corner	701800A-IC-WW
	Outside corner	701800A-OC-WW
	Step corner	701800A-SC-WW
Mounting		
Mounting clips	400381-25	

#### FlexiBRITE<sup>24</sup> Accessories

Mounting	
Mounting clips	402888-25 (bag of 25)
Mounting track	402889-10 (bag of 10)
Endcaps, Ruby Red	402884-R-10 (bag of 10), inserts not needed
Endcaps, Citrus Orange	402884-O-10 (bag of 10), inserts not needed
Endcaps, Noviol Gold	402884-Y-10 (bag of 10), inserts not needed
Endcaps, Emerald Green	402884-G-10 (bag of 10), inserts not needed
Endcaps, Bromo Blue	402884-B-10 (bag of 10), inserts not needed
Endcaps, Snow White	402884-10 (bag of 10), inserts included

\* "X" in part number denotes desired length. See length code column for length codes.

† Lemon Yellow illuminates lighter than its daytime color. Lemon Yellow daytime color is Amber.

‡ Available in U.S. and Canada only.

§ "Unlit product color charts" provided as a courtesy to give a general idea of product color. Colors in chart not printed using Pantone inks and may vary from actual Pantone number/color. For an accurate representation of product color, a Pantone Color Guide book should be used, or order a sample part. For more information on Pantone, visit Pantone.com.

#### LEDStripe 24V Accessories

Joint and corner covers		
Snap-on, colored joint and corner covers for clean finish	Joint	701361-Color
	Outside corner	701362-Color
	Inside corner	701363-Color
	Step corner	701364-Color
Cables and connectors		
Hook-up cable, 10-ft (3.0-m)	Connects LEDStripe 24V to power supply	701158-120
Hook-up cable, 15-ft (4.6-m)		701158-180
Jumper kit	For routing around field-cut sections	701385
Y connector	Three-way connector for joining two sections to one	701160-3
Wiring pigtail, large connector	Male, outdoor-rated connector	701187-DC
Wiring pigtail, small connector	Female, outdoor-rated connector	701188-DC
Mounting		
Mounting button	Circular button for standard installation	701156
Mounting clip	Square clip with flanged end	400775
Acrylic end cap	For adjusting product length	400828-FC
Field end cap installation kit	Glue, PCB sealer, de-burr sandpaper, instructions	701491

### Unlit product color charts<sup>§</sup>

#### ColorLINE

Red/ Ruby Red	Orange/ Citrus Orange	Yellow/ Noviol Gold
PANTONE 485 C	PANTONE 151 C	PANTONE 3975 C
Green Emerald Green	Blue/ Bromo Blue	
PANTONE 355 C	PANTONE 2935 C	

#### FlexiBRITE<sup>24</sup>

Ruby Red	Citrus Orange	Noviol Gold
PANTONE 1788 C	PANTONE 172 C	PANTONE 115 C
Emerald Green	Bromo Blue	
PANTONE 339 C	PANTONE 3005 C	

#### LEDStripe 24V

Red	Orange	Amber	True Yellow
PANTONE 1797 C	PANTONE 1665 C	PANTONE 2012 C	PANTONE 7405 C
Green	Blue	Lemon Yellow	
PANTONE 355 C	PANTONE 2935 C	PANTONE 138 C	

# Channel Letter

SloanLED channel letter LED lighting products are designed for the whole spectrum of channel letter applications, including face and halo lit, shallow to deep can depths, and routed acrylic letters.

## Extraordinary solutions are built on bright choices

SloanLED provides more than just lighting products.

We're your trusted partner, providing high-efficiency, long lasting light solutions that represent significant energy and maintenance cost savings, easy installation, faster ROI, and exceptional performance with consistent brightness and uniformity, which is what makes SloanLED the bright choice.



### Small channel letters

Channel letter applications  
2-4" (50-100 mm) deep

### Standard channel letters

Channel letter applications  
3-8" (75-200 mm) deep

### Large channel letters

Channel letter and sign box  
applications 5-8" (127-305 mm) deep





## Also available:

### SloanLED Prism<sup>12</sup> Nano+

Premium 12V LED lighting solution for block acrylic signs and small channel letters

- Available in White (7200 K, 6500 K, 5000 K, 4000 K, 3000 K), Red, Green, and Blue
- Designed for applications as shallow as 1" (25 mm)
- More modules per power supply up from 150 to an unprecedented 250 white modules on a 60 W power supply

10  
YEAR  
Product & Labor  
WARRANTY



12  
VDC

### SloanLED Spectrum RGBW Module

RGBW LED channel letter lighting solution

- RGBW technology for bright, white illumination and the widest gamut of colors
- Ideal for channel letters 4-8" (102-200 mm) deep
- Excellent thermal management for greater safety and reliability

10/5  
YEAR  
Product & Labor  
WARRANTY



12  
VDC

## VALUE



12  
VDC

### VL4

Everyday channel letter lighting solutions

MODS/FT(M)	COLORS	LUMENS/ MOD	EFFICACY
<b>VL4 Mini</b>			
2.5/ft (8.2/m)	White (7200 K, 6500 K, 5000 K, 4000 K, 3000 K), Red, Green, and Blue	Up to 40	Up to 111 lm/W
<b>VL4</b>			
1.4/ft (4.6/m)	White (7200 K, 6500 K, 5000 K, 4000 K, 3000 K)	107	111 lm/W
<b>VL4 HO</b>			
1.5/ft (4.9/m)	White (7200 K, 6500 K, 5000 K, 4000 K, 3000 K), Red, Green, and Blue	Up to 130	Up to 108 lm/W

## PERFORMANCE



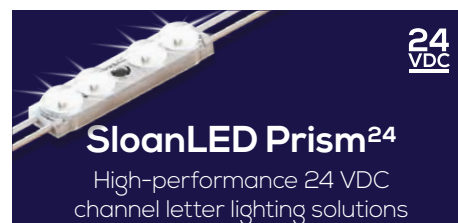
12  
VDC

### SloanLED Prism<sup>12</sup>

High-performance 12 VDC channel letter lighting solutions

MODS/FT(M)	COLORS	LUMENS/ MOD	EFFICACY
<b>SloanLED Prism<sup>12</sup> Mini</b>			
2.0/ft (6.6/m)	White (7100 K, 6500 K, 5000 K, 4000 K, 3000 K), Red, Green, and Blue	Up to 50	Up to 132 lm/W
<b>SloanLED Prism<sup>12</sup></b>			
1.5/ft (4.9/m)	White (7100 K, 6500 K, 5000 K, 4000 K, 3000 K), Red, Orange, Green, and Blue	Up to 124	Up to 135 lm/W

## PERFORMANCE+



24  
VDC

### SloanLED Prism<sup>24</sup>

High-performance 24 VDC channel letter lighting solutions

MODS/FT(M)	COLORS	LUMENS/ MOD	EFFICACY
<b>SloanLED Prism<sup>24</sup> Mini</b>			
2.5/ft (8.2/m)	White (7100 K, 6500 K, 5000 K, 4000 K, 3000 K), Red, Green, and Blue	Up to 40	Up to 100 lm/W
<b>SloanLED Prism<sup>24</sup></b>			
Whites 1.2/ft (3.9/m) Red 1.5/ft (4.9/m)	White (7100 K, 6500 K, 5000 K, 4000 K, 3000 K), Red, Green, and Blue	Up to 138	Up to 160 lm/W
<b>SloanLED Prism<sup>24</sup> HO</b>			
0.8/ft (2.6/m)	White (6500 K, 5000 K)	180	150 lm/W

**PERFORMANCE+**

High-performance 24 VDC  
channel letter lighting solutions

Modules per ft/m	Description	Part number	Optimal can depth	Power / module	Lumens / module	Efficacy	Protection class	Power capacity	Packaging
SloanLED Prism <sup>24</sup> Whites									
1.2/ft (3.9/m)	White 7100 K	701269-7W24SJ1-MB	3-8" (75-200 mm)	0.86 W	138	160 lm/W	IP66 & 68*	104 modules (86.7 ft / 26.4 m) per 100 W 24 VDC power supply	43.3 ft / 13.2 m (52 modules) per bag
	White 6500 K	701269-6W24SJ1-MB							
	White 5000 K	701269-5W24SJ1-MB							
	White 4000 K	701269-4W24SJ1-MB							
	White 3000 K	701269-3W24SJ1-MB							
SloanLED Prism <sup>24</sup> Colors									
1.5/ft (4.9/m)	Red (623 nm)	701269-RD24SJ1-MB	3-8" (75-200 mm)	0.43 W	26	60 lm/W	IP66 & 68*	208 modules (138.7 ft / 42.3 m) per 100 W 24 VDC power supply	34.7 ft / 10.6 m (52 modules) per bag
	Green (527 nm)	701269-GR24SJ1-MB		0.54 W	59	109 lm/W		167 modules (111.3 ft / 33.9 m) per 100 W 24 VDC power supply	
	Blue (468 nm)	701269-BL24SJ1-MB		0.59 W	18	31 lm/W		152 modules (101.3 ft / 30.9 m) per 100 W 24 VDC power supply	
SloanLED Prism <sup>24</sup> High Output									
0.8/ft (2.6/m)	White 6500 K	701269-6W24HJ3-MB	5-12" (127-305 mm)	1.20 W	180	150 lm/W	IP66 & 68*	75 modules (93.8 ft / 28.5 m) per 100 W 24 VDC power supply	47.5 ft / 14.5 m (38 modules) per bag
	White 5000 K	701269-5W24HJ3-MB							
SloanLED Prism <sup>24</sup> Mini Whites									
2.5/ft (8.2/m)	White 7100 K	701269-7W24MJ1-MB	2-4" (50-100 mm)	0.40 W	40	100 lm/W	IP66 & 68*	225 modules (90.0 ft / 27.4 m) per 100 W 24 VDC power supply	30.0 ft / 9.1 m (75 modules) per bag
	White 6500 K	701269-6W24MJ1-MB							
	White 5000 K	701269-5W24MJ1-MB							
	White 4000 K	701269-4W24MJ1-MB							
	White 3000 K	701269-3W24MJ1-MB							
SloanLED Prism <sup>24</sup> Mini Colors									
2.5/ft (8.2/m)	Red (623 nm)	701269-RD24MJ1-MB	2-4" (50-100 mm)	0.26 W	10	40 lm/W	IP66 & 68*	340 modules (136.0 ft / 41.5 m) per 100 W 24 VDC power supply	30.0 ft / 9.1 m (75 modules) per bag
	Green (529 nm)	701269-GR24MJ1-MB			22	85 lm/W		214 modules (85.6 ft / 26.1 m) per 100 W 24 VDC power supply	
	Blue (468 nm)	701269-BL24MJ1-MB		0.48 W	9	19 lm/W			
SloanLED Prism <sup>24</sup> LP									
1.5/ft (4.9/m)	White 7100 K	701269-7W24LJ1-MB	3-8" (75-200 mm)	0.43 W	70	162 lm/W	IP66 & 68*	208 modules (138.7 ft / 42.3 m) per 100 W 24 VDC power supply	43.3 ft / 13.2 m (52 modules) per bag
	White 6500 K	701269-6W24LJ1-MB							
	White 5000 K	701269-5W24LJ1-MB							
	White 4000 K	701269-4W24LJ1-MB							
	White 3000 K	701269-3W24LJ1-MB							

**SloanLED Prism<sup>24</sup>**

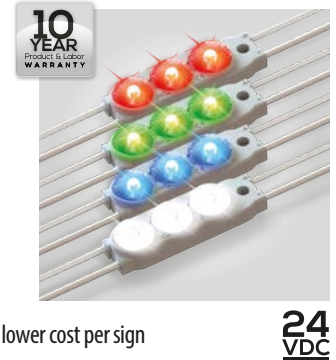
Premium 24V LED channel letter lighting solution

- Available in Standard (White [7100 K, 6500 K, 5000 K, 4000 K, 3000 K], Red, Green, Blue) and High Output (White [6500 K and 5000 K])
- Ideal for standard channel letters 3-8" (75-200 mm) deep (standard model) and large channel letters 5-12" (125-200 mm) deep (high output model)
- Use fewer modules for faster installation and lower cost per sign

**SloanLED Prism<sup>24</sup> Mini**

Premium 24V LED lighting solution for small channel letters

- Available in White (7100 K, 6500 K, 5000 K, 4000 K, and 3000 K), Red, Green, and Blue
- Ideal for small channel letters 2-4" (50-100 mm) deep
- Use fewer modules for faster installation and lower cost per sign

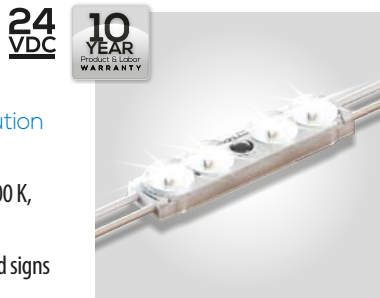


\* SloanLED Prism<sup>24</sup> IP68 test parameters are 1.3 m submersion for 30 minutes. Do not mount in submerged application or where module will be directly exposed to prolonged flowing or dripping water.

**SloanLED Prism<sup>24</sup> LP**

Premium 24V LED lighting solution for low-profile channel letters

- Available in White (7100 K, 6500 K, 5000 K, 4000 K, and 3000 K)
- Ideal for low-profile channel letters and signs 3-8" (75-200 mm) deep





## PERFORMANCE

High-performance 12 VDC  
channel letter lighting solutions

\* Prism IP68 test parameters are 1.3 m submersion for 30 minutes. Do not mount in submerged application or where module will be directly exposed to prolonged flowing or dripping water.

† Availability limited: Call to confirm.

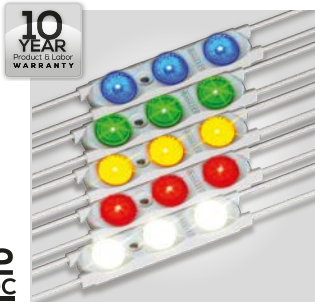
Modules per ft/m	Description	Part number	Optimal can depth	Power / module	Lumens / module	Efficacy	Protection class	Power capacity per 60 W 12 VDC power supply	Packaging	
SloanLED Prism <sup>12</sup> Whites										
1.5/ft (4.9/m)	White 7100 K*	701269-7W12SJ1-MB	3-8" (75-200 mm)	0.92 W	124	135 lm/W	IP66 & 68*	58 modules (38.7 ft / 11.8 m)	38.7 ft / 11.8 m (58 modules) per bag, 5 bags per carton	
	White 6500 K	701269-6W12SJ1-MB								
	White 5000 K*	701269-5W12SJ1-MB								
	White 4000 K*	701269-4W12SJ1-MB				120 130 lm/W				
	White 3000 K	701269-3W12SJ1-MB				115 125 lm/W				
SloanLED Prism <sup>12</sup> Colors										
1.5/ft (4.9/m)	Red (628 nm)	701269-RD12SJ1-MB	3-8" (75-200 mm)	0.72 W	24	33 lm/W	IP66 & 68*	75 modules (50.0 ft / 15.2 m)	50.0 ft / 15.2 m (75 modules) per bag, 4 bags per carton	
	Orange (606 nm)	701269-OR12SJ1-MB		0.52 W		46 lm/W		104 modules (69.3 ft / 21.1 m)	69.3 ft / 21.1 m (104 modules) per bag, 3 bags per carton	
	Green (527 nm)*	701269-GR12SJ1-MB		0.72 W		59		82 lm/W	75 modules (50.0 ft / 15.2 m)	50.0 ft / 15.2 m (75 modules) per bag, 4 bags per carton
	Blue (471 nm)	701269-BL12SJ1-MB				18		25 lm/W		
SloanLED Prism <sup>12</sup> Mini Whites										
2.0 ft (6.6 m)	White 7100 K	701269-7W12MJ1-MB	2-4" (50-100 mm)	0.38 W	50	132 lm/W	IP66 & 68*	142 modules (71.0 ft / 21.6 m)	71.0 ft / 21.6 m (142 modules) per bag, 3 bags per carton	
	White 6500 K	701269-6W12MJ1-MB								
	White 5000 K	701269-5W12MJ1-MB								
	White 4000 K	701269-4W12MJ1-MB								
	White 3000 K	701269-3W12MJ1-MB				45 118 lm/W				
SloanLED Prism <sup>12</sup> Mini Colors										
2.0 ft (6.6 m)	Red (628 nm)	701269-RD12MJ1-MB	2-4" (50-100 mm)	0.30 W	12	40 lm/W	IP66 & 68*	180 modules (90.0 ft / 27.4 m)	90.0 ft / 27.4 m (180 modules) per bag, 2 bags per carton	
	Green (527 nm)	701269-GR12MJ1-MB			30	100 lm/W				
	Blue (471 nm)	701269-BL12MJ1-MB			8	27 lm/W				
SloanLED Prism <sup>12</sup> Nano+										
7.6 ft (25 m)	White 7200 K	701269-7W12NJ1-MB	1-3" (25-75 mm)	0.22 W	35	160 lm/W	IP66	250 modules (32.8 ft / 10.0 m)	19.7 ft / 6.0 m (150 modules) per bag, 7 bags per carton	
	White 6500 K	701269-6W12NJ1-MB								
	White 5000 K	701269-5W12NJ1-MB								
	White 4000 K	701269-4W12NJ1-MB								
	White 3000 K	701269-3W12NJ1-MB				33.5 152 lm/W				
SloanLED Prism <sup>12</sup> Nano+ Colors										
7.6 ft (25 m)	Red (625 nm)	701269-RD12NJ1-MB	1-3" (25-75 mm)	0.13 W	4.9	38 lm/W	IP66	415 modules (54.5 ft / 16.6 m)	19.7 ft / 6.0 m (150 modules) per bag, 7 bags per carton	
	Green (527 nm)	701269-GR12NJ1-MB			13.5	104 lm/W				
	Blue (470 nm)	701269-BL12NJ1-MB			3.0	23 lm/W				

## SloanLED Prism<sup>12</sup>

Premium 12V LED channel letter lighting solution

- Available in Standard (White [7100 K, 6500 K, 5700 K, 5000 K, 4000 K, 3000 K], Red, Orange, Green, Blue)
- Ideal for standard channel letters 3-8" (75-200 mm) deep
- MacAdam Ellipse 3-Step white binning

12  
VDC



## SloanLED Prism<sup>12</sup> Mini

Premium 12V LED lighting solution for small channel letters

- Available in White (7100 K, 6500 K, 5000 K, 4000 K, 3000 K), Red, Green, and Blue
- Ideal for small channel letters 2-4" (50-100 mm) deep
- Use fewer modules for faster installation and lower cost per sign

12  
VDC



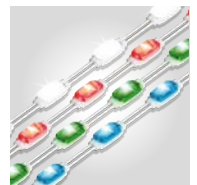
## SloanLED Prism<sup>12</sup> Nano+

Premium 12V LED lighting solution for block acrylic signs and small channel letters

10  
YEAR  
PRODUCT & LABOR  
WARRANTY

12  
VDC

- Available in White (7200 K, 6500 K, 5000 K, 4000 K, and 3000 K), Red, Green, and Blue
- Ideal for routed acrylic block letter, shallow channel letter, and backlit halo letter applications as shallow as 1" (25 mm)
- More modules per power supply, up from 150 to an unprecedented 250 white modules on a 60 W power supply
- Efficacy of up to 160 lm/W making SloanLED Prism12 Nano+ the class-leading solution over competing 12 & 24 V products



## VALUE SERIES

Everyday channel letter  
lighting solutions

\* Availability limited: Call to confirm.

Modules per ft/m	Description	Part number	Optimal can depth	Power / module	Lumens/ module	Efficacy	Protection class	Power capacity	Packaging	
VL4 Mini										
2.5/ft (8.2/m)	White 7200 K	701269-7W1A2-MB	2-3" (50-75 mm)	0.36 W	40	111 lm/W	IP66	150 modules (60.0 ft / 18.3 m) per 60 W 12 VDC power supply	60.0 ft / 18.3 m (150 modules) per bag, 3 bags per carton	
	White 6500 K	701269-6W1A2-MB								
	White 5000 K	701269-5W1A2-MB								
	White 4000 K	701269-4W1A2-MB			14	14 lm/W				
	White 3000 K	701269-3W1A2-MB								
	Red (623 nm)	701269-RD1A2-MB								
	Green (525 nm)*	701269-GR1A2-MB								
Blue (468 nm)	701269-BL1A2-MB	6.7	6.7 lm/W							

**VL4 Standard**

1.4/ft (4.6/m)	White 7200 K	701269-7W2A2-MB	3-5" (75-125 mm)	0.96 W	107	111 lm/W	IP66	56 modules (40.0 ft / 12.2 m) per 60 W 12 VDC power supply	40.0 ft / 12.2 m (56 modules) per bag, 10 bags per carton
	White 6500 K	701269-6W2A2-MB							
	White 5000 K	701269-5W2A2-MB							
	White 4000 K	701269-4W2A2-MB							
	White 3000 K	701269-3W2A2-MB							

**VL4 High Output (HO)**

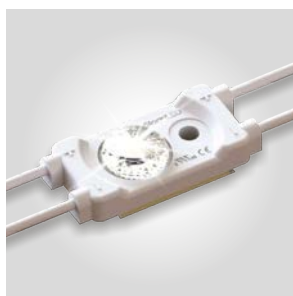
1.5/ft (4.9/m)	White 7200 K	701269-7W3A1-MB	5-8" (125-200 mm)	1.20 W	130	108 lm/W	IP66	45 modules (30.0 ft / 9.1 m) per 60 W 12 VDC power supply	30.0 ft / 9.1 m (45 modules) per bag, 10 bags per carton
	White 6500 K	701269-6W3A1-MB							
	White 5000 K	701269-5W3A1-MB							
	White 4000 K	701269-4W3A1-MB							
	White 3000 K	701269-3W3A1-MB		1.08 W	110	92 lm/W		50 modules (33.3 ft / 10.2 m) per 60 W 12 VDC power supply	33.3 ft / 10.2 m (50 modules) per bag, 9 bags per carton
	Red (623 nm)	701269-RD3A3-MB							
	Green (525 nm)	701269-GR3A3-MB							
	Blue (468 nm)	701269-BL3A3-MB							

**VL4 Super High Output (24 VDC)**

0.65/ft (2.13/m)	White 6500 K	701269-6W4A1-MB	5-12"+ (125-305 mm+)	1.42 W	233	164 lm/W	IP66	60 modules (92.3 ft / 28.1 m) per 100 W 24 VDC power supply	92.3 ft / 28.1 m (60 modules) per bag, 5 bags per carton
------------------	--------------	-----------------	-------------------------	--------	-----	----------	------	--	---

**VL4 Mini**Everyday LED lighting solution  
for small channel letters

- Available in White (7200 K, 6500 K, 5000 K, 4000 K, 3000 K), Red, Green, and Blue
- Ideal for small channel letters 2-4"  
(50-100 mm) deep
- Innovative peel-n-stick, perforated, one-piece release tape liner reduces installation time by up to 30%

**12  
VDC****VL4**

Everyday standard face lit solutions

- Available in White (7200 K, 6500 K, 5000 K, 4000 K, 3000 K)
- Ideal for standard channel letters 3-8"  
(75-200 mm) deep
- Innovative peel-n-stick, perforated, one-piece release tape liner reduces installation time by up to 30%

**12  
VDC****VL4 HO**Everyday 12 VDC LED lighting  
solution for large channel letters

- Available in White (7200 K, 6500 K, 5000 K, 4000 K, 3000 K), Red, Green, and Blue
- Ideal for large channel letters 5-8"  
(127-200 mm) deep
- Innovative peel-n-stick, perforated, one-piece release tape liner reduces installation time by up to 30%

**12  
VDC****VL4 Super HO**Everyday 24 VDC LED lighting  
solution for large, deep channel letters

- Available in White (6500 K)
- Ideal for large, deep channel letters 5-12"  
(127-305 mm)+ deep
- Innovative peel-n-stick, perforated, one-piece release tape liner reduces installation time by up to 30%

**24  
VDC**



## Also available:

LEDs per ft/m	Description	Part number	Optimal can depth	Power per ft/m	Lumens per ft/m	Efficacy	Protection class	Power capacity	Packaging
SloanLED FlexTAPE Whites									
18 / 60	White 6500 K	701990-6W12SA1	2" (50 mm)	1.4 / 4.6 W	160 / 525	114.3 lm/W	IP64*	42 modules (30.0 ft / 9.1 m) per 60 W 12 VDC power supply	Ten (10) 16.4-ft (5-m) reels per carton
	White 5000 K	701990-5W12SA1							
	White 3500 K	701990-3512SA1							

## SloanLED FlexTAPE Colors

18 / 60	Red (623 nm)	701990-RD12SA1	2" (50 mm)	1.1 / 3.6 W	39.6 / 129.8	35.4 lm/W	IP64*	3 assemblies (49.2 ft / 15.0 m) per 60 W 12 VDC power supply	Ten (10) 16.4-ft (5-m) reels per carton
---------	--------------	----------------	---------------	-------------	--------------	-----------	-------	---	---

\* May be installed in damp or wet environment in enclosure with appropriate weather protection. Do not mount in submerged application or where module will be directly exposed to prolonged flowing or dripping water.

LEDs per mod	Part number	Optimal can depth	Max. power / mod	Lumens per channel					Efficacy					Protection class	Power capacity	Packaging
				R	G	B	White	RGBW (Total)	R	G	B	White	RGBW (Total)			
3	701269-RGBW3M1-MB	4"-8" (102-200 mm)	0.92 W	10	26	6	26	68	43 lm/W	113 lm/W	26 lm/W	113 lm/W	73 lm/W	IP65	60 modules (40.0 ft / 12.2 m) per 60 W 12 VDC power supply	40.0 ft / 12.2 m (60 modules) per bag, 5 bags per carton

## SloanLED Spectrum RGBW Module

# Sign Cabinet/Box

SloanLED offers brilliant sign lighting solutions for single and double-sided, narrow to large, new and retrofit, box and cloud signs. Our products are designed and engineered with sign makers in mind, to provide bright, even illumination, incredible ROI, and fast, easy installation.

We spend our time inside the box, to provide lighting solutions that go beyond the box to brighten your bottom line.



## SloanLED BrightLINE 2

LED illumination for shallow, single-sided sign boxes

- Ideal for single-sided, fabric-face light boxes 1.2 - 4.7" (30 - 120 mm) deep
- **NEW** LP version features tighter spacing at 4" (100 mm) for exceptionally shallow cabinets
- Lower energy consumption over previous generation allowing more product per power supply

SloanLED BrightLINE 2 is better than ever, delivering bright, uniform illumination and fast, easy installation in shallow, single-sided, fabric-face light boxes more efficiently with lower energy consumption allowing for more product per power supply!



24  
VDC



SloanLED BrightLINE 2

SloanLED BrightLINE 2 LP

			Long 6500 K	Long 4000 K	Short 6500 K	Short 4000 K	Long 6500 K	Long 4000 K	Short 6500 K	Short 4000 K
Part number			701989-6W24LB3	701989-4W24LB3	701989-6W24SB3	701989-4W24SB3	701989-6W24LB4	701989-4W24LB4	701989-6W24SB4	701989-4W24SB4
Coverage per row	Cabinet depth	1.6" (40 mm)	4.0" (100 mm)							
		2" (50 mm)	5.0" (120 mm)							
		2.4" (60 mm)+	6.0" (150 mm)							
Strips per foot / meter			2.0 / 6.7 (fully spaced)				3.1 / 10.0 (fully spaced)			
Life rating			>54,000 hours							
Power per strip			3.0 W		1.0 W		1.94 W		0.65 W	
Efficacy			173 lm/W							
Lumens per strip			530		177		335		113	
Power capacity per SloanLED 100 W 24 VDC power supply			14.8 ft (4.5 m) / 30 strips		44.3 ft (13.5 m) / 90 strips		15.1 ft (4.6 m) / 46 strips		45.3 ft (13.8 m) / 138 strips	



## SloanLED BrightLINE Outdoor

Outdoor illumination for shallow, single-sided sign boxes

SloanLED BrightLINE Outdoor brings the performance and versatility of our BrightLINE 2 product to shallow, single-sided, push-through signs and light boxes requiring high levels of brightness in outdoor applications.

- Ideal for shallow, single-sided, push-through signs and light boxes 1.2 - 8.0" (30 -200 mm) deep requiring high levels of brightness in outdoor applications
- Outdoor silicone coating for safe, reliable use in outdoor applications
- Long and Short lengths available for ease of installation

**NOW WITH  
IMPROVED  
EFFICACY**



Sign Cabinet/Box

SloanLED BrightLINE Outdoor Long

SloanLED BrightLINE Outdoor Short

			6500 K	5000 K	6500 K	5000 K
Part number			701989-6W24LC2	701989-5W24LC2	701989-6W24SC2	701989-5W24SC2
Coverage per row	Cabinet depth	1.2" (30 mm)	3.0" (75 mm)			
		1.6" (40 mm)	4.0" (100 mm)			
		2.0" (50 mm)	5.0" (120 mm)			
		2.4" (60 mm)+	6.0" (150 mm)			
Strips per foot / meter			2.0 / 6.7 (fully spaced)		3.1 / 10.0 (fully spaced)	
Life rating			>54,000 hours			
Power per strip			3.0 W		1.0 W	
Efficacy			173 lm/W			
Lumens per strip			530		177	
Power capacity per SloanLED 100 W 24 VDC power supply			14.8 ft (4.5 m) / 30 strips		44.3 ft (13.5 m) / 90 strips	

## SignBOX 3

LED illumination for single or double-sided sign boxes

SignBOX 3, for single or double-sided sign cabinets, features micro prism lens technology engineered to deliver bright, uniform illumination and wider spacing in new or retrofit sign boxes.



- Illuminates 5" (125 mm) from the face
- SignBOX 3 Module features a peel-and-stick adhesive back for fast, easy installation
- 24 VDC loading allows 48 single-sided modules or 24 double-sided modules per power supply for maximum efficiency and fewer power supplies

- \* Prism IP68 test parameters are 1.3 m submersion for 30 minutes. Do not mount in submerged application or where module will be directly exposed to prolonged flowing or dripping water.
- † SloanLED BrightLINE Outdoor is designed for outdoor sign and display applications, and should be mounted inside a sign or enclosure that protects from submersion, direct exposure to the elements and prolonged flowing or dripping water.

		Strapped single-sided	Strapped double-sided	Module
Part number	6500 K	701946-6WLSL1	701946-6WDLS1	701946-6WLSLT1
	5000 K	701946-5WLSL1	701946-5WDLS1	701946-5WLSLT1
Modules per ft (m)		1 (3.3)		
Coverage per row		12" (305 mm)		
Optimal light throw		5 - 12" (125 - 300 mm) from face		
Protection class		IP66 & IP68*		
Life rating		>60,000 hours		
Power per module		1.92 W	3.84 W	1.92 W
Efficacy		156 lm/W		
Power capacity per SloanLED 100 W 24 VDC power supply		48	24	48
Fastening		Clips with mechanical fasteners		Peel-n-stick
Packaging		1 chain (60 modules) per carton, 40 clips included		3 chains, 48 modules per chain
Lumens per module		300	600	300

### SignBOX 3 Accessories

Mounting hardware	
Bracket – Bag of 10	402107-10
Coupler – Bag of 10	402108-10
Clip – Bag of 20	402106-20



## PosterBOX 3

Large, shallow fabric-faced light box illumination

PosterBOX™ 3, engineered specifically for large, fabric-faced light box applications, is the bright and even lighting solution this unique application requires. With an output of 1700 lumens (Long) and a built-in LED module spacer, striping and spotting vanish.

- Slim, edge mounted modules make installs fast and easy
- Bright, even illumination in large cabinets with shallow depths of 2" (50 mm) for single-sided applications and 4" (100 mm) for double-sided applications
- High efficiency and long life
- Built-in module spacer eliminates measuring and yields perfect LED pitch every time

Part number	Short	701946-6WSRP1
	Long	701946-6WLRP1
Viewing angle	12.2° × 44.8° illumination	
Color temperature (nominal)	6500 K	
Minimum cabinet depth	Single-sided	3" (75 mm)
	Double-sided	4" (100 mm)
Protection class	IP66	
Power per module	Short	7.2 W
	Long	14.0 W
Efficacy	Short	118 lm/W
	Long	121 lm/W
Lumens per assembly	Short	850
	Long	1700
Power capacity	6 modules per SloanLED 100 W 24 VDC power supply	
Fastening	Mechanical fasteners, Peel-n-stick (optional)	
Packaging	6 assemblies per tray, 5 trays per carton	

## PosterBOX Mini

Side illumination for shallow or narrow light boxes

PosterBOX™ Mini is a cost-effective, edge-lit cabinet lighting solution for lightbox applications as shallow as 2" (50 mm) deep, and gives installers unprecedented freedom with adjustable spacing and an innovative design that accommodates shallow light boxes of any shape making it the bright choice for a variety of applications.

- Cost effective, edge-lit cabinet lighting solution for applications as shallow as 2" (50 mm) deep
- Innovative design and adjustable spacing make installation easy for a variety of light boxes of different depths and shapes
- FanFlare™ technology projects light in a fan pattern to evenly illuminate sign face

Part number	701946-6WMLP1
Viewing angle	15° × 40°
Module spacing	7.4" (188 mm) center-to-center
Protection class	IP66
Power per module	1.2 W
Efficacy	87 lm/W
Lumens per module	104
Power capacity	45 modules per SloanLED 60 W 12 VDC power supply
Fastening	Peel-n-stick and mechanical
Packaging	60 modules per bag, 10 bags per carton

Specifications subject to change without notice.



## PosterBOX ID

High-performance light box illumination for interior signage and POP applications

PosterBOX™ ID is a value-driven lighting solution delivering the power and brilliance of PosterBOX 3 to indoor applications—trimming unnecessary hardware and outdoor protection to offer a low-cost solution with the same quality and reliability you've come to expect from SloanLED.

- Illuminate box widths up to 10 ft (3 m) by placing product on opposing sides of the display
- Top-tier LED chips and high-performance optics
- Constant Current Technology

Part number	Short	701946-6WSNP1
	Long	701946-6WLN1
Location rating	Indoor use only	
Color temperature	6500 K	
Power per assembly	Short	7.2 W
	Long	14.0 W
Efficacy	Short	118 lm/W
	Long	121 lm/W
Lumens per assembly	Short	850
	Long	1700
Power capacity	Short	Max. of 12 units per SloanLED 100 W 24 VDC power supply
	Long	Max. of 6 units per SloanLED 100 W 24 VDC power supply
Fastening	Peel-n-stick and mechanical	
Packaging	Six (6) assemblies per bag, 5 bags per carton	



## PosterBOX Slim 2

Side illumination for shallow light boxes

PosterBOX™ Slim 2 washes light across single and double-sided displays using FanFlare™ lens technology that optimizes the light inside the box. The result is uniform light without the stripes associated with fluorescent tubes.

- Excellent white light intensity and uniformity
- Optimal for applications as shallow as 2" (50 mm), e.g., indoor textile prints, movie posters, and cabinets using FlexFace®

Part number	701946-6WXP3	701946-5WXP3
Color temperatures	6500 K	5000 K
Light coverage†	2 ft (0.6 m)	
Modules per foot/meter	1.4 / 4.6	
Minimum box depth	2 in (50 mm), single or double-sided	
Protection class	IP66	
Viewing angle	15° × 43°	
Power per module	1.68 W	
Efficacy	110 lm/W	
Lumens per module	185	
Power capacity	32 modules per SloanLED 60 W 12 VDC power supply	
Fastening	Peel-n-stick and mechanical	
Packaging	32 daisy chained modules per bag, 4 bags per carton	



† Testing highly recommended as all substrates and graphics vary.  
‡ For best performance, 6.5 m (2 ft) spacing is recommended.

# Linear Lighting

Linear Lighting from SloanLED is a great solution for illuminating cove, awning, and wall wash applications or to highlight non-illuminated signs.



## HighLINER 3

Outdoor and indoor linear lighting

- Easy installation for both new construction and retrofit
- Improves walkway and aisle visibility and building aesthetics
- Easily daisy-chain up to six (6) 4-ft (1.2-m) luminaires with 100 W driver
- NSF/ANSI 2 qualified for use around food processing and on processing equipment



Color temperatures (CCT)		3500 K	5000 K
Part number	1' (0.3 m), 4.6 W	701912-L135C3i18	701912-L150C3i18
	2' (0.6 m), 9.3 W	701912-L235C3i18	701912-L250C3i18
	4' (1.2 m), 18.5 W	701912-L435C3i18	701912-L450C3i18
	6' (1.8 m), 27.8 W	701912-L635C3i18	701912-L650C3i18
	8' (2.4 m), 37.0 W	701912-L835C3i18	701912-L850C3i18
Output (nominal)	1' (0.3 m), 4.6 W	559 Lumens	607 Lumens
	2' (0.6 m), 9.3 W	1,119 Lumens	1,168 Lumens
	4' (1.2 m), 18.5 W	2,237 Lumens	2,430 Lumens
	6' (1.8 m), 27.8 W	3,356 Lumens	3,646 Lumens
	8' (2.4 m), 37.0 W	4,475 Lumens	4,861 Lumens
Efficacy*		126 lm/W	132 lm/W
Color rendering (CRI)		>80	
Ingress protection		Luminaire: IP68†; Std. wire nut with housing‡: IP66	
UL location rating		Dry, damp, and wet locations	
Life rating		L <sub>70</sub> >100,000 hours calculated‡	
Dimming		All luminaires dimmable with 0-10 V or PWM input to drivers	

## SlimLINER

Low-profile outdoor and indoor linear lighting

- Fast, easy installation with versatile mounting options
- Can be cut in the field to custom lengths
- Slim, lightweight, low-profile fixture
- 12" (305 mm) bend radius
- Illuminates awnings evenly
- Constant Current Technology (CCT)



Part number	701956-5WL461	701956-3WL461
Color temperatures (CCT)	5000 K	3500 K
Lumens per fixture	970	825
Color rendering (CRI)	70 (nominal)	82 (nominal)
In-field bends	Radial bend: 12 in (305 mm)	
Protection class	IP66 & IP68	
Fastening	Peel-n-stick or mounting clips (401203), 4 included with each unit	
Power capacity	6 units per SloanLED 60 W 12 VDC power supply	
Dimensions L × W × H	46" × 0.89" × 0.35" (1168 mm × 23 mm × 9 mm)	

\* Tolerance range for optical and electrical data +/- 15%.

† IP68 ratings provide protection for extreme outdoor and wet applications, or harsh weather exposure.

‡ Do not mount in submerged applications.

‡ Based on LED component manufacturer data.

§ Luminaires ship with mounting clips and wire nut housings.

For more information, visit [SloanLED.com](http://SloanLED.com)



# SloanLED LEDBlade

LED canopy fascia & wall wash fixture

- Ideal for canopy fascia and wall wash applications requiring excellent light throw
- Can be cut to custom lengths in the field
- Linear form factor for fast, easy installation
- No UV emissions
- 5-year parts and labor assistance warranty



Part number	701994-6WA5X1
Color temperature (CCT)	6500 K
Lumens per assembly	3,118
Life rating	L <sub>70</sub> @ >60,000 hours
Efficacy	120 lm/W
Ingress protection	IP66
UL location rating	Dry, damp, and wet
Fastening	Mounting clips
Power capacity	Three (3), 5-ft (1.5-m) SloanLED LEDBlade sections per SloanLED 100 W 24 VDC power supply

## SloanLED LEDBlade Accessories

Cables and connectors		
Hook-up cable, 10-ft (3.0-m)	Connects LEDBlade to power supply	701158-120-DC
Hook-up cable, 15-ft (4.6-m)		701158-180
Wiring pigtail, large connector	Male, outdoor-rated connector	701187-DC
Wiring pigtail, small connector	Female, outdoor-rated connector	701188-DC
Mounting		
Mounting clip	For mounting product to surfaces	402453
Field end cap	For adjusting product length	402494
Field end cap installation kit	Glue, PCB sealer, de-burr sandpaper, instructions	701491

# Power Supplies

SloanLED power supplies are engineered to last and are among the most rugged in their class.

## 12 VDC\* – Compatible with SloanLED 12 VDC products

Model	Part number	Dimensions	Nominal input voltage	Max. input current	Power output	Location rating	Operating temperature	Protection class
<b>Self-Contained 20 W</b>	701680	4.65 in × 1.38 in × 1.03 in (118 mm × 35 mm × 26 mm)	100-240 VAC, 50-60 Hz	0.55 A	20 W @ 12 VDC, Class 2 output	Dry and damp locations	-30° C to +60° C	IP67

## 24 VDC\* – Compatible with SloanLED 24 VDC products

Model	Part number	Dimensions	Nominal input voltage	Max. input current	Power output	Location rating	Operating temperature	Protection class
<b>60S1(D) 60 W</b> <i>Dimming and non-dimming</i>	701895-60S1(D)	5.80 in × 1.80 in × 1.00 in (147 mm × 46 mm × 25 mm)	120-277 VAC, 50-60 Hz	0.8 A	60 W @ 24 VDC, Class 2 output	Dry and damp locations	-40° C to +60° C, derate to 50% of max load at +70° C	IP64
<b>100L1(D) 100 W</b> <i>Dimming and non-dimming</i>	701895-100L1(D)	9.5 in × 1.7 in × 1.0 in (241 mm × 43 mm × 25 mm)	120-277 VAC, 50-60 Hz	0.95 A	100 W @ 24 VDC, Class 2 output	Dry and damp locations	-40° C to +60° C, derate to 50% of max load at +60° C	IP54
<b>24S2(D) 100 W</b> <i>Dimming and non-dimming</i>	701895-24S2(D)	8.60 in × 1.73 in × 1.14 in (218 mm × 44 mm × 29 mm)	108-277 VAC, 50-60 Hz	1.20 A	96 W @ 24 VDC, Class 2 output	Dry and damp locations	-40° C to +60° C, derate to 50% of max load at +65° C	IP54

## Accessories



**Universal Primary  
Wire Enclosure<sup>†</sup>**  
403008 (Gen 2)



**Universal LED  
Wireless Dimmer**  
601115



**Universal  
Dimming Controller<sup>‡</sup>**  
701666

- \* Configured for Class 2 Output.
- † Compatible with 701507-60C1, 701507-60C2, 701507-120D1, and 701936.
- ‡ Compatible with 701507-60C3D, 701895-60S1D, 701895-24S2D, and 701895-100L1D.

# Outdoor Commercial

SloanLED outdoor commercial LED lighting systems capture customer attention with consistent and bright illumination, in addition to providing sizable energy savings over non-LED fixtures.



All SloanLED Lighting Systems products installed in the U.S. & Canada are protected by our **Performance+ Turnkey Service Warranty**. Visit product page for details



## Revolutionary design for powerful solutions.

### PDL3 MODUS

LED lighting system

PDL3 MODUS sets a new standard in canopy/soffit lighting with its slim, lightweight, 1" (25 mm) design, optimized Type V symmetric distribution, included driver, and IP68 rating offering the industries best protection from dust and water intrusion.

- Standard power supply module includes three field-selectable lumen output power settings: High (123, 141, 164 W output), Medium (76, 98, 119 W output), and Low (36, 50, 64 W output)



Standard



High Output

- Superior efficacy, up to 159 lm/W, for lower energy consumption and a smaller carbon footprint
- Faster ROI, industry-leading 10-year warranty, and virtually maintenance-free
- Energy savings up to 250% over typical HID fixtures**

\* Requires 1-10 V connector cable (P/N 410168).  
† ATEX certification for luminaire at 5000 K CCT only.  
‡ All models are shipped at the highest system power setting unless ordered with factory preset options P1 or P2.  
§ Based on 5000 K CCT data.



	PDL3 MODUS						PDL3 MODUS High Output		
	M75			M150			MH200		
Power settings	Low (36 W) P2	Med (50 W) P1	High (64 W) DF†	Low (76 W) P2	Med (98 W) P1 <sup>a</sup>	High (119 W) DF†	Low (123 W) P2	Med (141 W) P1	High (164 W) DF†
System efficacy <sup>a</sup>	159.3lm/W	157.9 lm/W	155.0 lm/W	152.7 lm/W	146.9 lm/W	142.5 lm/W	169.6 lm/W	167.8 lm/W	165.5 lm/W
Input voltage	100-277 VAC, 50-60 Hz								
Delivered lumens <sup>a</sup>	5,670	7,869	9,951	11,540	14,800	16,880	20,700	23,210	26,040
Light distribution	Symmetric (Type 5)								
Color temperature (CCT)	4000 K, 5000 K								
Ingress protection	IP68 (highest dust and water protection)								
UL location rating	Suitable for wet locations								
Life rating	Reported: L <sub>70</sub> >60,000 hours; Calculated: L <sub>70</sub> >150,000 hours						Reported: L <sub>70</sub> >60,000 hours; Calculated: L <sub>70</sub> >175,000 hours		
Dimming	1-10 VDC control on power supply*								

Specifications subject to change without notice.





## Canopy/Soffit Applications

Driver enclosure

Order number: 601106

Included in kit: Power supply enclosure, gasket, and mounting hardware.†

- Power supply enclosure allows water to pass through and out
- Gasket seals against canopy – Eliminates need to seal installation with tar/roofing material



## Surface Mounted Applications

Surface mounting enclosure

Order number: 601022-M

Included in kit: SloanLED surface mounting box.†

- Mounts to: Solid flat surface, reinforced J-box



## Shoebox Retrofit Applications

Shoebox mounting plate

Order number: 401397 (White), 401397-BZ (Bronze)

401397 (shoebox plate – **ordered separately**) combined with any PDL3 luminaire will complete typical 24 × 24 shoebox housing retrofits.†

Ordering Information									
Part number									
Example: 701948-5WTWT3-M150									
701948 - <input type="text"/> T <input type="text"/> 3- <input type="text"/> <input type="text"/>									
Color temp. (CCT)		Body color		Power* (Low, Med, High power settings)					
Code	Desc.	Code	Desc.	Code	Desc.	Code	Desc.		
4W	4000 K	BZ	Bronze (MH200 only)	M75	75 W power (36, 50, 64 W output)	(blank)	High power setting (default)		
5W	5000 K	WT	White	M150	150 W power (76, 98, 119 W output)	P1	Medium power setting		
				MH200	200 W high output power (123, 141, 164 W output)	P2	Low power setting		



**ALSO AVAILABLE**

### PDL3 MODUS Retrofit Kit

for LSI Richmond Scottsdale Fixtures

Order number:  
702001

Included in kit: Enclosure cover, foam gasket, threaded tube, metal strap, and mounting hardware

- Easy installation – Cover mounts to existing LSI diecast housing using existing screws, or hardware included in kit

# Refrigerated Display

Cold Series™ refrigerated display LED lighting systems use cutting edge LED technology to combine efficiency, performance, and value for state of the art merchandising.



All SloanLED Lighting Systems products installed in the U.S. & Canada are protected by our **Performance+ Turnkey Service Warranty**.  
Visit product page for details

## Cold Deck FIT

LED lighting system for multi-deck merchandisers

Cold Deck FIT lighting system is designed to optimize visual appeal of produce, meat, and dairy cases (multi-deck merchandisers). Extends shelf life of perishables through reduced heat output.

- Illuminates product facings with crisp, uniform light dispersion
- Optimize visual appeal and color accuracy of meat products with new "Prime" meat-tuned LED chip
- Waterproof (IP68) for produce "wet zones" or spray down maintenance of display cases
- **Up to 77% energy savings compared with typical fluorescent fixtures**



## Cold Door 4

LED lighting system for cooler doors



Cold Door 4 LED lighting system provides the perfect balance of intensity and color rendition to deliver crisp, uniform illumination across doors for walk-in coolers/freezers and remote glass-door reach-ins.

- Three styles to choose from: **ECO** for maximum energy savings, **Performance** for higher illumination levels, **French Door** for bright, uniform illumination in double-door applications
- Complete suite of options comes in lengths of 4, 5, 6, and 7-ft (1.2, 1.5, 1.7, and 1.8-m), ensuring solutions for all door sizes
- Delivers bright, uniform light, vibrant color, and reduced glare to product facings at depths as shallow as 2" (50 mm)

\* DLC based on 120 V



## 24 VDC Power Supplies – Compatible with SloanLED 24 VDC Refrigerated Display products

Model	Part number	Dimensions	Nominal input voltage	Max. input current	Power output	Location rating	Operating temperature	Protection class
<b>100L1(D) 100 W</b> <i>Dimming and non-dimming</i>	701895-100L1(D)	9.5 in × 1.7 in × 1.0 in (241 mm × 43 mm × 25 mm)	120-277 VAC, 50-60 Hz	0.95 A	100 W @ 24 VDC, Class 2 output	Dry and damp locations	-40° C to +60° C, derate to 50% of max load at +60° C	IP54



Cold Deck FIT			1' (0.3 m)	3' (0.9 m)	4' (1.2 m)
Input voltage			100-240 VAC, 50-60 Hz		
Output voltage			24 VDC, Class 2 low voltage		
Fixture power	Canopy		2.3 W	9.0 W	11.3 W
	Shelf		1.1 W	3.4 W	4.5 W
Illuminance	2700 K	Canopy	241	963	1204
		Shelf	137	410	547
	3500 K	Canopy	266	1063	1329
		Shelf	153	797	611
	4000 K	Canopy	276	1104	1380
		Shelf	158	472	630
	Prime	Canopy	N/A	N/A	630
		Shelf			313
Color temperatures (CCT)		2700 K, 3500 K, 4000 K, Prime (meat-tuned)*			
Color rendering (CRI)		>80			
Dimming		Optional Motion Sensing†			
Ingress protection		IP68 (highest dust and water protection)			
Life rating		>60,000 hours (L <sub>90</sub> ) <sup>§</sup>			
Body color		Smooth white			

## Cold Deck FIT Accessories§

Stand-off clip	401091
5 clip spanner wrenches	401368-5
Small terminal block	401350
Large terminal block	401351

## Cold Deck FIT Dimming

Dimming controller	701890-PWR
Occupancy sensor, Standard¶	400661
Occupancy sensor, WideΔ	400964

## Ordering Information

## Part number

Example: 701940-4WC4F1

701940-  -  -  F1

Kelvin temperature		Type		Length	
Code	Desc.	Code	Desc.	Code	Desc.
MW	Prime (meat-tuned)*	C	Canopy	1	1-ft (0.3-m)
2W	2700 K	S	Shelf	3	3-ft (0.9-m)
3W	3500 K			4	4-ft (1.2-m)
4W	4000 K				

\* Prime available in 4' (1.2 m) length only.

† Based on LED component manufacturer data.

‡ See Cold Series Dimming Control data sheet.

§ 6 Six (6) clips included with each canopy light to space by 1/2" (13 mm) or angle by 10°. Additional clips may be used to increase spacing and/or angle (see install guide). Additional clips may also be used to angle shelf lights if desired. Screws not included for fastening to non-magnetic shelves.

¶ May require an L-bracket (not included) for mounting.

Δ Alternative for 400661. Cat 5 cabling to the sensor not included.

Cold Door 4			4' (1.2 m)			5' (1.5 m)			6' (1.7 m)			7' (1.8 m)		
			3500 K	4000 K	5000 K	3500 K	4000 K	5000 K	3500 K	4000 K	5000 K	3500 K	4000 K	5000 K
Input voltage			100-277 VAC (to power supply)°											
Fixture voltage			24 VDC											
Lumens	ECO	Center	1327.5	1,333.9	1,347	1,787.7	1,796.3	1,814	1,787.7	1,796.3	1,814	1,787.7	1,796.3	1,814
		End	663.7	667	673.5	893.8	898.2	907	893.8	898.2	907	893.8	898.2	907
	Performance	Center	1,700.4	1,716.6	1,745	2,055	2073	2,109	2,409.5	2,432.7	2,473	2,591	2,615.8	2,659.1
		End	850.2	858.3	872.5	1,027.5	1,036.5	1,054.5	1,204.8	1,216.4	1,236.5	1,295.5	1,307.9	1,329.6
	French Door	Center	2,197	2,220	2,266.1	2,654.9	2,682.7	2,738.4	3,112.8	3,145.4	3,210.6	3,341	3,376	3,446
		End	1,098.5	1,110	1,133.1	1,327.5	1,341.4	1,369.2	1,556.4	1,572.7	1,605.3	1,670.5	1,688	1,723
System power	ECO	Center	9.31 W	9.21 W	9.12 W	12.54 W	12.41 W	12.28 W	12.54 W	12.41 W	12.28 W	12.54 W	12.41 W	12.28 W
		End	4.3 W	4.65 W	4.61 W	6.27 W	6.2 W	6.14 W	6.27 W	6.2 W	6.14 W	6.27 W	6.2 W	6.14 W
	Performance	Center	12.98 W	12.88 W	12.76 W	15.69 W	15.56 W	15.42 W	18.39 W	18.25 W	18.08 W	19.78 W	19.63 W	19.44 W
		End	6.49 W	6.44 W	6.38 W	7.84 W	7.78 W	7.71 W	9.2 W	9.13 W	9.04 W	9.9 W	9.82 W	9.72 W
	French Door	Center	16.29 W	16.29 W	16.3 W	19.68 W	19.69 W	19.69 W	23.08 W	23.08 W	23.09 W	24.77 W	24.78 W	24.78 W
		End	8.14 W	8.15 W	8.15 W	9.84 W	9.85 W	9.85 W	11.54 W	11.54 W	11.54 W	12.39 W	12.39 W	12.39 W
Efficacy (lm/W)	ECO	Center	143	145	148	143	145	148	143	145	148	143	145	148
		End												
	Performance	Center	131	133	137	131	133	137	131	133	137	131	133	137
		End												
	French Door	Center	135	136	139	135	136	139	135	136	139	135	136	139
		End												
Color rendering (CRI)			>80											
Life rating			>60,000 hours (L <sub>90</sub> ) at maximum operating conditions											
Dimming			Optional Motion Sensing†											
Body color			Black (White cover)											

## Cold Door 4 Dimming

Dimming controllerº	701890-PWR
Occupancy sensor, standard	400661¶
Occupancy sensor, wide	400964Δ

## Ordering Information

## Part number

Example: 701906-4WC5V4

701906-   

Color temp. (CCT)		Type		Length (nominal)	
Code	Desc.	Code	Desc.	Code	Desc.
35W	3500 K	C	Center	4V4	4-ft (1.2-m)
4W	4000 K	E	End	5V4	5-ft (1.5-m)
5W	5000 K			6V4	6-ft (1.7-m)
				7V4	7-ft (1.8-m)
				4X4	4-ft (1.2-m)
				5X4	5-ft (1.5-m)
				6X4	6-ft (1.7-m)
				7X4	7-ft (1.8-m)
				4F4	4-ft (1.2-m)
				5F4	5-ft (1.5-m)
				6F4	6-ft (1.7-m)
				7F4	7-ft (1.8-m)

º Calculated from LM80 data.

¶ Must be used in conjunction with associated dimming controller.

Δ Also functions as a power controller.

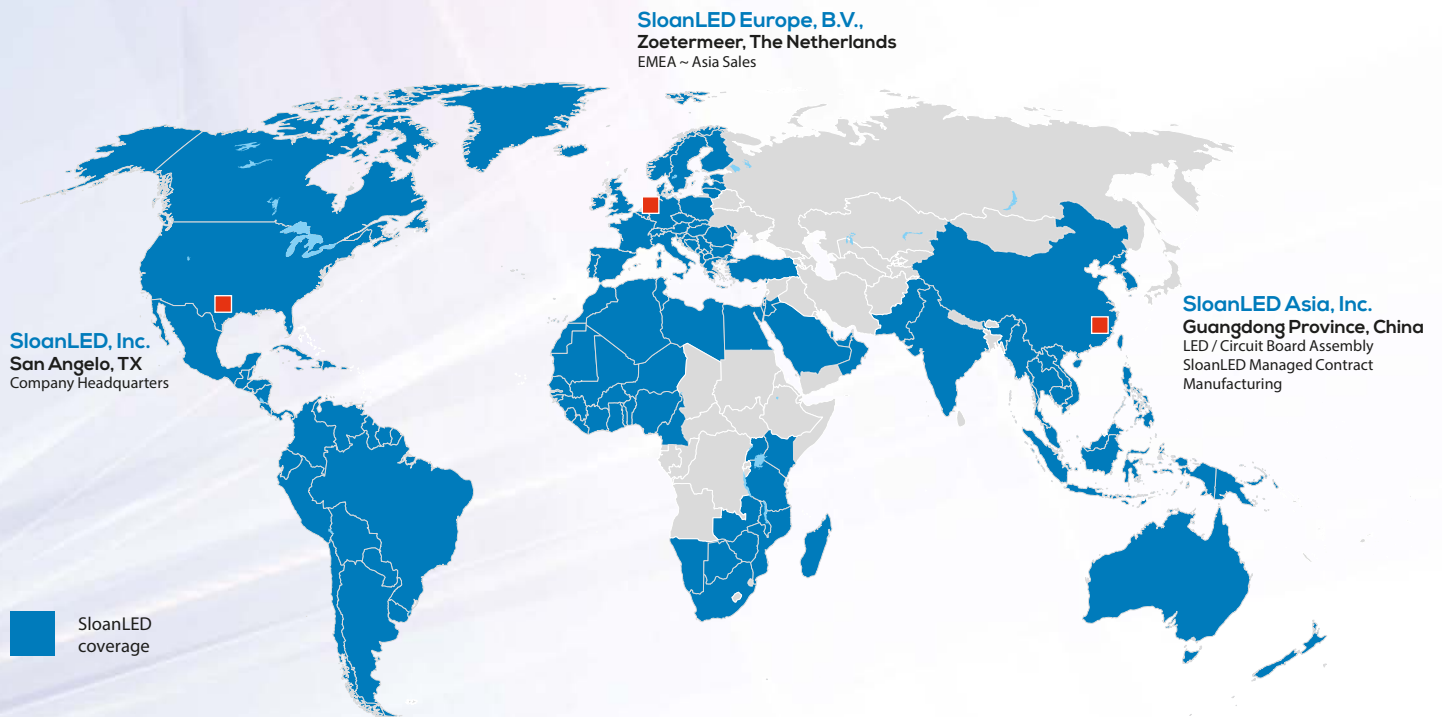






# No matter where you are. We've got you covered.

From Alaska to Australia, with 150+ employees, and the best global coverage in the industry, we've got you covered.



#### SloanLED Headquarters

3490 Venture Dr., San Angelo, TX, USA  
325 227 4577 • [info@SloanLED.com](mailto:info@SloanLED.com)

#### SloanLED Europe b.v.

Argonstraat 110, 2718 SN Zoetermeer, NL  
+31 88 12 44 900 • [europe@SloanLED.com](mailto:europe@SloanLED.com)



[SloanLED.com](http://SloanLED.com)

Trade names, marks and logos shown are the property of their respective owners. Specifications may change without notice.

© 2024 SloanLED Rev CG 2024-04-10

