

Relax, things just got **Brighter**

2022

Spa
Catalog

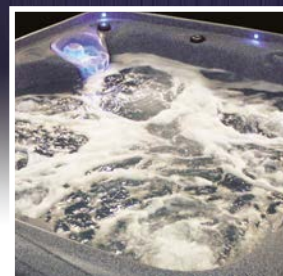
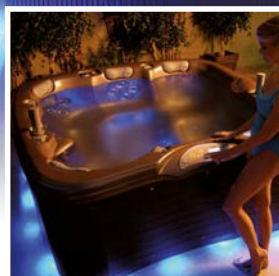
CLUSTER LIGHTS | CONTROLLERS | BULLET LIGHTS | SKIRT LIGHTING | PERIMETER LIGHTING



STRIP LIGHTING | BULLET LIGHT LENSES | JUMPER CABLES | POWER SUPPLIES

Spectacular Lighting for a Sensational Experience.

SloanLED offers full-featured, color-changing LED lighting systems, designed for easy installation, operation, and service, for the complete spectrum of today's pools and spas.



LiquaLED Offers an LED Lighting System for Every Spa

SloanLED's LiquaLED product line offers full-featured, color changing LED systems for the complete spectrum of today's spas – from the most basic entry-level spa to your most exclusive, premium models.

Centered on LiquaLED's proprietary controllers and software programs, the line offers three distinct systems and price points. Simply select the system that best matches each spa model's LED lighting requirements. LED lighting components include cluster main lights (in three sizes), bullet "spot" lights (in five configurations), perimeter lights and skirt lights. Controller choices include two stand-alone system controllers, and two self-contained LED cluster lights each with its own on-board controller (stand-alone, one expandable).

Use the system matrix below to help determine the best system for any given spa. The product specifications, in the pages that follow, offer complete product descriptions, features and benefits, and technical specifications. Your SloanLED Territory Manager can assist you in the evaluation, design and prototyping of all your LED systems.

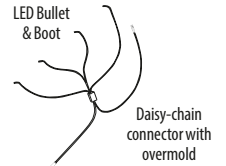
Market category	Light colors	LiquaLED controller	Accepts bullets and clusters	Accepts perimeter lighting and skirt lights	Points of light (including a main light)	Main light included	External 12 VDC power required
Premium spas	Four (4) zone, seven (7) custom color sequences	Multi-zone Controller P/N 701898-DLO	Yes	Yes	Up to 100	No	No
Mid-range, full-featured spas	Sequence through ten (10) color combinations	Control 40 P/N 701678-DLO	Yes	Yes	12-80	No	No
Entry-level value line spas	Sequence through ten (10) color combinations	UltraBRITE LED light w/on-board controller and expansion cable P/N 701739-SAOX1	Yes	No	1-12	Yes	No
Entry-level spas	Sequence through ten (10) color combinations	Mini-UltraBRITE LED light w/on-board controller (bi-pins for connection to socket), P/N 701861-9-P	No	No	N/A	Yes	No

How the Systems Work

- All LEDs are controlled by a central Controller box
- Spa pack switch turns LEDs on/off and changes color settings
- Cables daisy-chain together with locking Guardian over-molded connectors
- Cables can either be put together in one long string or split into multiple branches
- Controller is protected by in-line fuse

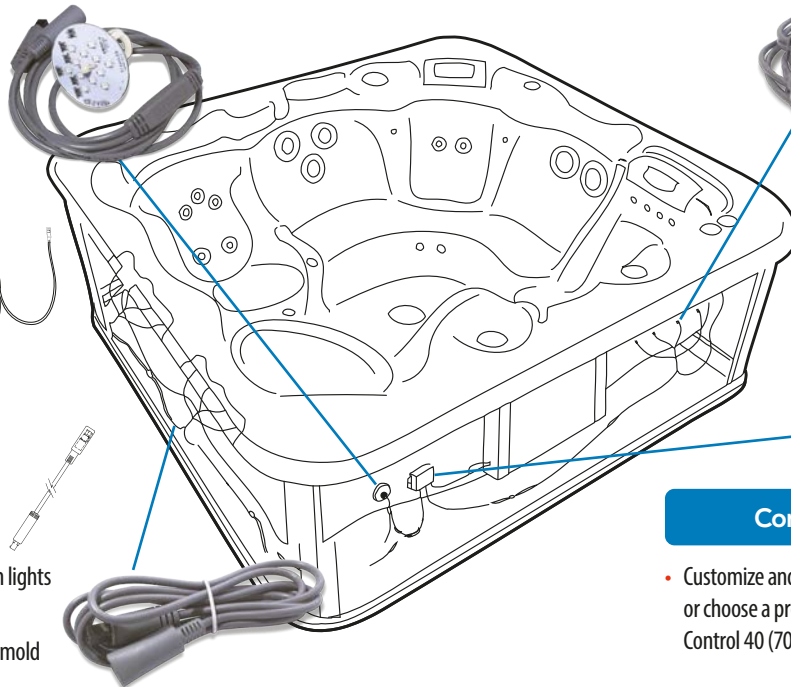
Bullet Lights & Lenses

- Cable branches into either 4 LEDs (Quad), 2 LEDs (Dual), or 1 LED (Single)
- LED boot secures and protects light
- Standard or customized bullet light lenses



Cluster Mainlights

- Three sizes available: 21-LED (5" lens), 14-LED (3.5" lens), and 7-LED (2" lens)
- Mounts in receptacle that threads to end of light fixture
- Stand-alone cluster with co-board controller also available (UltraBRITE 701739-SAOX1), or Mini UltraBRITE (701861-9-P)



Jumper Cables

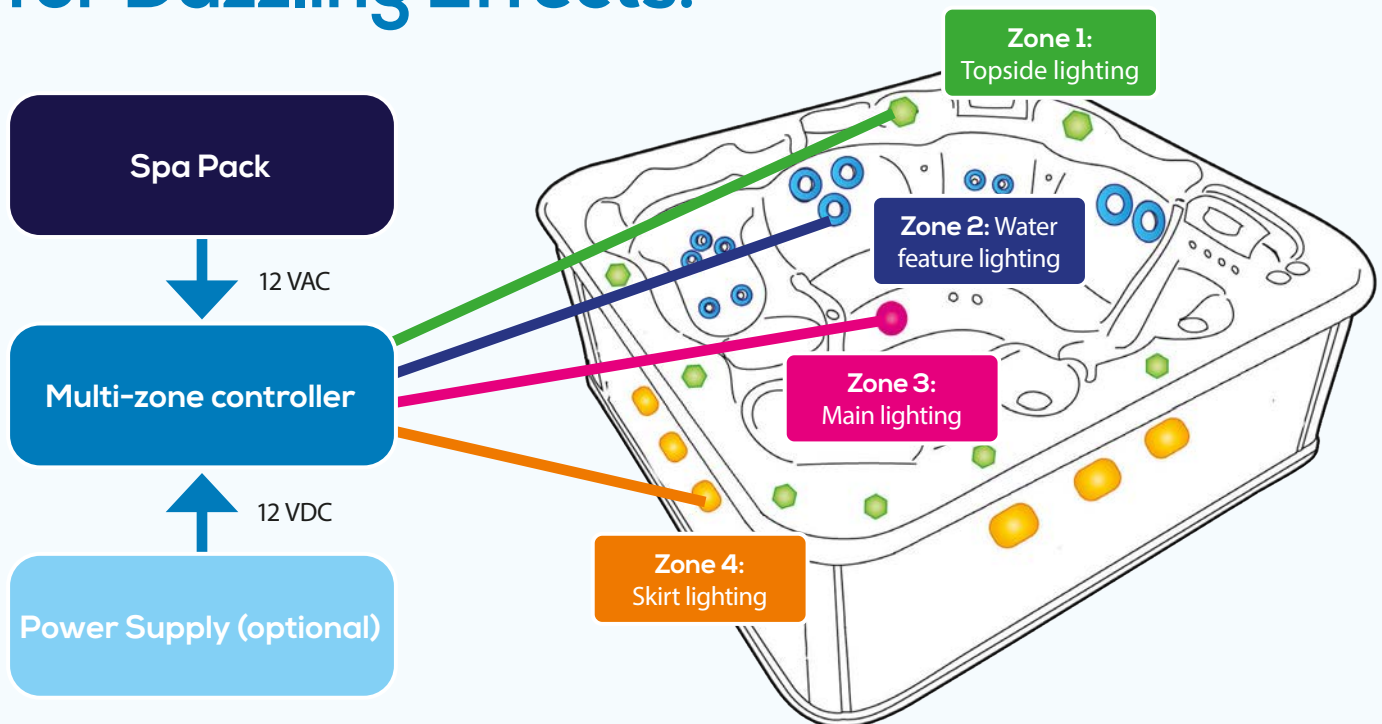
- Used for extended connection between lights
- Available in 2-ft and 5-ft lengths
- Female connector protected by an overmold

Controller

- Customize and define color with Multi-Zone Controller or choose a pre-programmed controller such as our Control 40 (701678-DLO) or UltraBRITE (701739-SAOX1)

Dynamic Control for Dazzling Effects.

- OEM defined lighting
- Customizable, independent control of up to four regions
- Compatible with all LiguaLED lighting fixtures



Interior Lighting

Our line of LiquaLED interior lighting solutions add drama and elegance to pools and spas, along with the confidence that our products are engineered to provide the long lifespan, reliability, and ease of use you've come to expect from SloanLED.



UltraBRITE Integrated Controller LED Cluster Lamp

- Fully integrated solution – no separate controller required
- Ultra bright LEDs – 50% brighter than traditional LEDs
- New wider viewing angle and shorter standoff - fully compatible with smaller cluster lenses and provides more uniform illumination of larger cluster lenses
- Lamp includes fully integrated controller that can display single colors, smooth color transitions, color transition sequences, and strobe effects
- Bayonet-style mounting – installs into standard lens bases, fitting lenses from 2" to 5" in diameter
- Expandability – integrated expansion cable allows addition of LiquaLED Bullet Lights or Cluster Main Lights (see chart below) and provides for full synchronization between all lights
- Includes adapter cable, allowing connection via either two-prong MLX plug or 0.25" quick-connect terminals
- Overmold connectors (Guardian Series)
- Reliable moisture-resistant electronic coatings

* Do not exceed a total of 16 POL (4 quads)



Part number	AC.....	701739-SAOX1
	DC.....	701739-SAOX1-DC
High-brightness LEDs per cluster	AC.....	10 (equal to 16 standard LEDs)
	DC.....	9 (equal to 16 standard LEDs)
Input voltage	12 VAC (701739-SAOX1)	
	12 VDC (701739-SAOX1-DC)	
Typ. current (nonload)	AC.....	309 mA
	DC.....	67 mA
Typ. current (with max load)		750 mA
Diameter of PCB		1.57" (40 mm)
Fits lens sizes (approx.)		~ 2 - 5" (51 - 127 mm)
Lamp depth (front to back)		1.44" (37 mm)

UltraBRITE Mini Standard Cluster Lamp

- Fully integrated solution – no separate controller required
- Color changing LEDs for transition and sequencing effects
- Bi-pin (-P) for incandescent replacement/retrofitting standard bulb sockets
- Reliable moisture-resistant electronic coatings

Part number	701861-9-P
LEDs per cluster	Nine – 5 mm LEDs
Input voltage	12 VAC
Typical max. current	200 mA
Fits lens sizes	~2 to 5" (50 to 125 mm) approx.



Cluster Main Lights

Ultra-bright color-changing LED clusters for vivid, trouble-free lighting

- High power LED clusters for main or other large light applications
- Color changing LEDs – latest LED technology produces full spectrum of colors and allows for color changing and sequencing
- Can be integrated with LiquaLED Bullet and Accent Lights
- Daisy-chain Wiring – flexible configurations and easy installation
- Ultra bright LEDs – 30% brighter than traditional LEDs
- Positive lock connectors – quick installs, reliable, industrial strength connections
- Guardian connector overmold – protects from moisture, dirt, foaming operations
- High temp cable – proven not to melt under highest temperature foaming operations

Part number	Description	Input voltage	LEDs per cluster	Typ. max current	Fits lens sizes
701570-18-DLSO	18 LED Cluster	12 VAC	18	160 mA	~5" (125 mm)
701570-12-DLSO	12 LED Cluster		12	135 mA	~3 - 5" (75 - 125 mm)
701570-6-DLSO-S	6 LED Cluster		6	80 mA	~2 - 5" (50 - 125 mm)

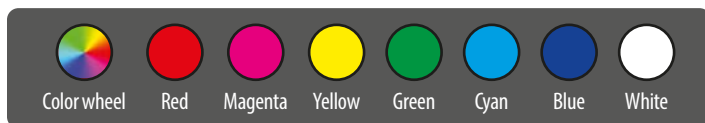


701570-12-DLSO

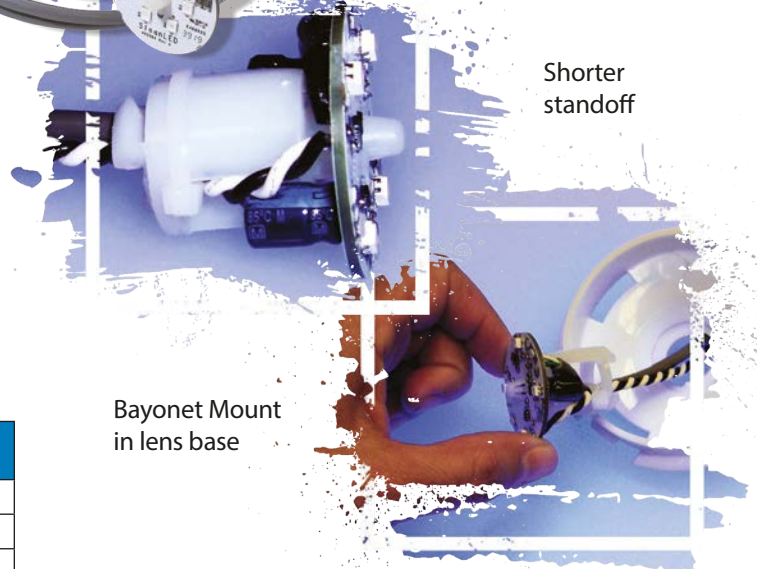


701570-18-DLSO

Colors and transition effects



701570-6-DLSO-S



Shorter standoff

Bayonet Mount in lens base

Use with any combination of clusters, bullets, and accent lights:

LiquaLED expansion items		Max. current (each)	Max. # of units*
18 LED Cluster	701570-18-DLSO	160 mA	1 cluster
12 LED Cluster	701570-12-DLSO	135 mA	1 cluster
6 LED Cluster	701570-6-DLSO-S	80 mA	3 clusters
Quad LED Bullet	701564-4-F	80 mA	4 cable sets
Dual LED Bullet	701564-2-F	40 mA	6 cable sets
Single LED Bullet	701564-1-F	50 mA	4 cable sets
Skirt Light	701787-T	60 mA	4 lights

* Do not exceed a total of 16 POL (4 quads)



Controllers

SloanLED offers the full spectrum of possibilities with high-caliber, moisture resistant controllers that deliver color and brightness control, creating a soothing, satisfying experience for the senses.



LiquaLED Multi-Zone Controller

- Independent control of up to 4 regions (zones) within spa
- SloanLED-provided default behavior or OEM-defined experience for each zone
- Controls and synchronizes all LEDs
- Controls up to 100 LEDs
- Controlled by spa pack
- Attached lighting can be powered by spa pack or optional external power supply
- Customized color, brightness, jump speed, wheel speed
- Compatible with all LiquaLED Cluster Lights, Bullet Lights, and Accent Lights
- Moisture-resistant electronics
- Easy to mount anywhere in spa's equipment area
- Patent pending control technology
- UL Approved - file number #E242370



Mode	Description
1	Zone 1 and zone 4 are Red. Zone 2 and zone 3 change from Red → Green → Blue
2	Zone 1 and zone 4 are Red-Blue. Zone 2 and zone 3 change from Red → Green → Blue
3	Zone 1 and zone 4 are Blue. Zone 2 and zone 3 change from Red → Green → Blue
4	Zone 1 and zone 4 are Green. Zone 2 and zone 3 change from Red → Green → Blue
5	Zone 1 and zone 4 are Red-Green-Blue. Zone 2 and zone 3 change from Red → Green → Blue
6	Zone 1 and zone 4 are in color wheel mode (gradual color change). Zone 2 and zone 3 change from Red → Green → Blue
7	Zone 1 and zone 4 change from: Blue → Red/Blue → Red → Red/Green → Green → Green/Blue. Zone 2 and zone 3 change from Red → Green → Blue (slow)

Part number701898-DLO

Max. points of light>100

Required input voltage (AC)12 VAC from Spa Pack

Required input voltage (DC)Optional 12 VDC input (3A max.)

Output wattage2 Amps / 24 Watts

Number of individual color "shows" ...Up to 7 (programmable)

Lighting zonesUp to four (4)

Dimensions W × H × D2.9" × 4.375" × 1.0"



LiquaLED Control 40

- Compatible with all LiquaLED Cluster Lights, Bullet Lights, and Accent Lights
- UL Approved – File number #E242370
- Serviceable fused input for safety
- Moisture-resistant electronics
- Easy to mount anywhere in spa's equipment area
- AC & DC power types available
- Controlled by spa pack
- No external power supply required
- Patent pending control technology

Part numberAC..... 701678-DLO
DC..... 701678-DLO-DC

Max. points of light.....AC..... 40, plus one cluster light
DC..... 80, plus one cluster light

Required input voltage (701678-DLO) ... 12 VAC from Spa Pack

Required input voltage (701678-DLO-DC)..... 12 VDC

Output wattageAC..... 1 A / 12 W
DC..... 1.5 A / 18 W

On/Off controlTop-side Spa Pack control panel

# Button push	Color mode	Description
0 (default)	Color wheel	LED gradually changes color from: Red/Green → Red → Red/Blue → Blue → Blue/Green → Green →
1	White	Red, Green, and Blue ON
2	Green/Blue	Only Green and Blue ON
3	Red/Blue	Only Red and Blue ON
4	Blue	Only Blue ON
5	Red/Green	Only Red and Green ON
6	Green	Only Green ON
7	Red	Only Red ON
8	Color flash	LEDs change color every few seconds from: Blue/Green → Red/Blue → Blue - Red/ Green → Green → Red →
9	Slow wheel	Red, Green, and Blue ON and flashing
10	Color wheel	Back to default



LiquaLED Control 20

- Compatible with all current LiquaLED lighting products
- No external power supply required
- Reliable moisture-resistant electronic coatings
- Start-up behavior retains settings from previous use



Part number701931-DLO

Max. points of light20

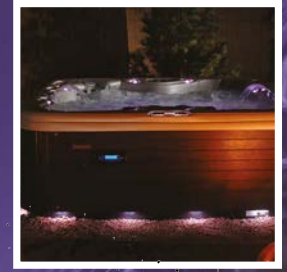
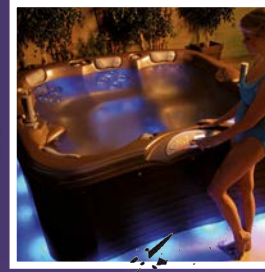
Required input voltage (AC) 12 VAC from Spa Pack

Required input voltage (DC).....No external DC supply required

Typical max. output0.5 A / 6 W

On/Off controlTop-side Spa Pack control panel

Accent Lighting



Accent lighting from SloanLED, uses advanced technology to showcase and enhance pools and spas, such as water features, baja shelves, and steps, in an exhilarating way that paints a brilliant landscape of relaxation.

LiquaLED Bullet Lights

- Color changing LEDs for transition and sequencing effects
- Daisy chain wiring for fast, flexible configuration and installation
- Reliable moisture-resistant electronic coatings
- Several accessory lens types available

701564-2-F



Part number	Description	LEDs per cable	Typical max. current per cable	Connector wire length	Outer/inner bullet light wire length
701564-1-F	Single-LED Cable	1	50 mA	50" (1270 mm)	25" / 25" (635 mm / 635 mm)
701564-2-F	Dual-LED Cable	2	40 mA		25" / 17" (635 mm / 432 mm)
701564-4-F	Quad-LED Cable	4	80 mA	48" (1219 mm)	52" / 48" (1321 mm / 1219 mm)
701564-6-F	Hexa-LED Cable	6		76" (1930 mm)	36" / 24" (914 mm / 610 mm)
701564-4-F-XL	Extended length Quad-LED Cable Connector & Bullet Wire	4			



701564-1-F



701564-4-F



701564-6-F



Skirt Lighting

- Color changing LEDs for transition and sequencing effects
- Durable housing with integrated threaded shaft
- Low profile design eliminates damaging during crating, shipping, and use

Part number701787-T
 Number of modules.....1 each
 Typical max. current60 mA each
 Cable length36" (915 mm) cable
 (connector-to-connector)

Perimeter Lighting

- Color changing LEDs for transition and sequencing effects
- Peel-n-stick or mechanical mounting of modules
- Available in a 7.5" (191 mm) string with four modules, spaced on 18" (457 mm) centers

Part number701755-M4-18-DLO
 Number of modules.....4 per string
 Typical max. current280 mA per string
 Cable length7.5" (191 mm) total cable
 (connector-to-connector)

LiquaLED Strip Lights

- Color changing LEDs for transition and sequencing effects
- Compatible with all current LiquaLED lighting products
- Daisy chain wiring for fast, flexible configuration and installation
- LED strip sealed in IP68 silicone sleeve
- Water resistant snap fit connectors



701963-RGB-4P-81

Part number	Description	LEDs per ft	Input voltage	Watts per ft	Typical max. current
701963-RGB-4P-22	LiquaLED Strip Light, 22"	18	12 VDC	0.71	108 mA
701963-RGB-4P-81	LiquaLED Strip Light, 81"			0.47	267 mA

Accessories



Bullet Light Lenses

Shapes, textures, and clarity/frost

- New standard lenses
 - Frosted / diffuse lens
 - Octagonal clear lens
 - Wide, low-profile texture lens
- All lenses are
 - UV-stable polycarbonate
 - Easy installation
 - Proven reliability



Description	Standard Lens	Wide Flange Lens	Wide Flange Faceted Lens	Large Round Lens (1" diameter)
Part number	400372	400372-W	400372-WF	400372-RND
Flange diameter	0.530" (13.5 mm)	0.600" (15.2 mm)	0.580" (14.7 mm)	0.580" (14.7 mm)
Mounting method	Nut on threaded and/or press fit using ribs on shaft			
Drill size	W Drill (0.386" / 9.8 mm)			
Length (bottom of flange to end of threads)	1.127" (28.6 mm)			
Length (non-threaded ribbed section)	0.284" (7.21 mm)	0.125" (3.18 mm)		
Nut	400388*			
Standard (0.070" / 17.8 mm) O-ring only		400417		N/A
Thicker (0.103" / 2.6 mm) O-ring only	N/A	400510		N/A

* Recommended torque 8 in-lb when used with 400372(-X) lenses.

Jumper Cables



- Can be used anywhere in the LiqualLED system, including between Cluster Lights, Bullet Lights, and Perimeter Lights
- Guardian Overmold Connector System

Part number	Length
410117-24-0	2' (0.6 m)
410117-60-0	5' (1.5 m)

Miscellaneous Accessories

Part number	Description
400354	1.6 A, 250 V Fuse (for use with 701678-DL0)
701819	120 VAC to 12 VAC, 1 A wall mount power supply (for trade shows/demo use)
701786	LiqualLED tester
400524	LiqualLED tester instructions
701680	Self-Contained 20 W Power Supply
700548	LiqualLED adapter

Spa Sample Request Form

Company: _____

Contact: _____

Address: _____

Phone: _____ Fax: _____

Email: _____

Spa model: _____ Spa size: _____

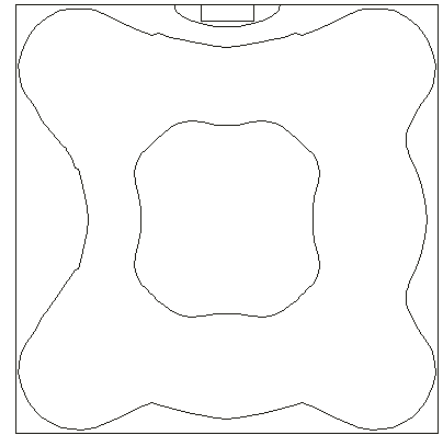
Expected annual production: _____

Production start date: _____

Requested sample ship date: _____

Shipping instructions/comments: _____

Requested by: _____ Date: _____



Part Number	Description	Qty
Interior Lighting		
701739-SAOX1	UltraBRITE Integrated Controller LED Cluster Lamp (AC)	
701739-SAOX1-DC	UltraBRITE Integrated Controller LED Cluster Lamp (DC)	
701861-9-P	UltraBRITE Mini Standard Cluster Lamp	
701570-18-DLSO	18 LED Cluster	
701570-12-DLSO	12 LED Cluster	
701570-6-DLSO-S	6 LED Cluster	
Controllers		
701898-DLO	LiquaLED Multi-Zone Controller	
701678-DLO	LiquaLED Control 40 (AC)	
701678-DLO-DC	LiquaLED Control 40 (DC)	
701931-DLO	LiquaLED Control 20	
410119	1/4" QC to MLX Connector Adapter	
400354	Fuse, 1.600A, 250V,X20MM, Fast Acting for 701678	
Accessories		
701507-MODW	Modular 60 Power Supply	
701680	SC20 Power Supply	
701819	Wall Mount Power Supply (1 amp, 12VDC)	
410117-24-0	2' Jumper Cable	
410117-60-0	5' Jumper Cable	
700548	LiquaLED Adapter	
701786	LiquaLED Tester	
400524	LiquaLED Tester Instructions	

Part Number	Description	Qty
Accent Lighting		
701564-1-F	Single-LED Bullet	
701564-2-F	Dual-LED Bullet	
701564-4-F	Quad-LED Bullet	
701564-6-F	Hexa-LED Bullet	
701564-4-F-XL	Extended Length Quad (connector and bullet wires)	
701755-M4-18-DLO	6' Premium Perimeter String	
701787-T	Skirt Light	
400372	Bullet Lens	
701963-RGB-4P-22	LiquaLED Strip Light, 22"	
701963-RGB-4P-81	LiquaLED Strip Light, 81"	
400338	Nut, 3/8, Nylon Hex for Fits All Lens style	
400372-W	Wide Flange Bullet Lens	
400372-WF	Wide Flange Faceted Bullet Lens	
400372-RND	Large Round Lens (1" diameter)	
400417	O-Ring - .364IDX.070 CS	
400510	O-Ring - .362IDX.130 CS	
Marketing materials		
000701-CAT	Spa Catalog	

Ordering Information

Part Number	Product Description	Min Order Qty	Master Carton Qty	Comments
Interior Lighting				
701739-SAOX1	UltraBRITE Integrated Controller LED Cluster Lamp	10	120	Fits 2"–5" Lens, includes adapter cable
701861-9-P	UltraBRITE Mini Standard Cluster Lamp	10	120	
701570-18-DLS0	18 LED Cluster	10	100	Fits ~ 5" Lens, Includes 36" cable
701570-12-DLS0	12 LED Cluster	10	100	Fits 3" – 5" Lens, Includes 36" cable
701570-6-DLS0-S	6 LED Cluster	10	100	Fits 2" – 5" Lens, Includes 36" cable
Controllers				
701898-DLO	LiquaLED Multi-Zone Controller	10	28	Requires external 12 VDC power only when exceeding 1 Amp power from Spa Pack
701678-DLO	LiquaLED Control 40 (AC)	10	60	Does not require external power
701678-DLO-DC	LiquaLED Control 40 (DC)	10	60	Does not require external power
701931-DLO	LiquaLED Control 20	10	60	Does not require external power
410119	1/4" QC to MLX Connector Adapter	10	1,000	
400354	Fuse, 1.600A, 250V,X20MM, Fast Acting for 701678	100	TBD	
Accent Lighting				
701564-1-F	Single-LED Bullet	10	100	Includes cabling
701564-2-F	Dual-LED Bullet	10	100	Includes cabling
701564-4-F	Quad-LED Bullet	10	100	Includes cabling
701564-6-F	Hexa-LED Bullet	10	100	Includes cabling
701564-4-F-XL	Extended Length Quad (connector and bullet wires)	10	100	Includes cabling
701755-M4-18-DLO	6' Premium Perimeter String	10	50	
701787-T	Skirt Light	10	TBD	Mounts through 5/8" hole
400372	Bullet Lens	500	500	Order in 500s, Fits 3/8" hole
701963-RGB-4P-22	LiquaLED Strip Light, 22"	?	?	?
701963-RGB-4P-81	LiquaLED Strip Light, 81"	?	?	?
400338	Nut, 3/8, Nylon Hex for Fits All Lens style	500	500	Order in multiples of 500
400372-W	Wide Flange Bullet Lens	500	500	Order in multiples of 500
400372-WF	Wide Flange Faceted Bullet Lens	500	500	Order in multiples of 500
400372-RND	Large Round Lens (1" diameter)	500	500	Order in multiples of 500
400417	O-Ring - .364IDX.070 CS	500		Order in multiples of 500
400510	O-Ring - .362IDX.130 CS	500	TBD	Order in multiples of 500
Accessories				
701507-MODW	Modular 60 Power Supply	5	20	60 Watts
701680	SC20 Power Supply			20 Watts
701819	Wall Mount Power Supply (1 amp, 12VDC)			
410117-24-0	2' Jumper Cable	20	400	
410117-60-0	5' Jumper Cable	20	200	
701786	LiquaLED Tester			
700548	LiquaLED Adapter			
400524	LiquaLED Tester Instructions	20	200	

SloanLED Headquarters
5725 Olivas Park Drive, Ventura, CA, USA
805.676.3200 • info@SloanLED.com

SloanLED Europe b.v.
Argonstraat 110, 2718 SN Zoetermeer, NL
+31 88 12 44 900 • europe@SloanLED.com



SloanLED.com

Trade names, marks and logos shown are the property of their respective owners. Specifications may change without notice.

© 2022 SloanLED Rev F 2022-10-12

