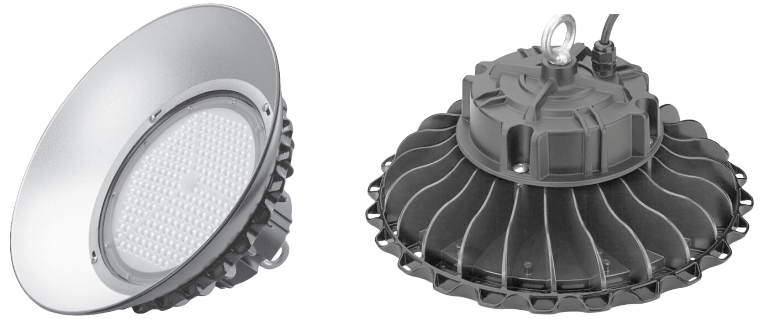


Area 51

LED die cast high bay fixture
LCG-UFO

- Ideal replacement for linear fluorescent, 400 W, or 1000 W metal halide high bays
- Magnesium alloy cooling housing for better cooling and durability
- High performance optics reduce glare and provide bright, uniform illumination
- IP65 rated for wet locations
- Hang chain mounting with safety cable
- Optional shade accessory for reduced glare



Specifications

Electrical

System power

Wattage	Lumens	Efficacy
100 W	15,000	150 lm/W
150 W	21,000	140 lm/W
200 W	28,000	140 lm/W

Input voltage 120-277 VAC and 347-480 VAC*

Power factor >0.95

Lighting

Color temperature (CCT) 4000 K, 5000 K

Color rendering (CRI) >70

Driver efficiency >90%

Performance

Operating temperature -30° C to +45° C

Ingress protection IP65

UL location rating..... Suitable for wet locations

Life rating L₇₀ @ >50,000 hours

Dimming 1-10 VDC control on power supply

* Available by special order, please contact SloanLED for lead times.

† Performance+ Service Turnkey Warranty applies to U.S. & Canada installations ONLY.

Construction

Housing Die cast magnesium alloy

Finish Black and White* polyester powder coat

Optics Polycarbonate

Mounting

Chain hung Die cast loop included

Power cord 55" (1.4 m) long, 3 wire, 18 gauge double-insulated

Safety cable 30" (0.8 m) long steel braided cable included with carabiner hardware

Documentation

Warranty 5-year limited and Performance+ Turnkey Service Warranty†

Agency listings..... CE, DesignLights Consortium® (DLC) Premium, cULus, FCC

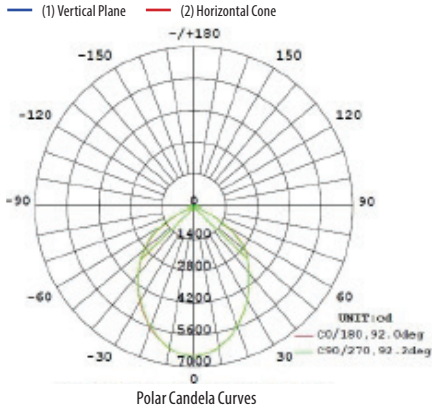


Area 51

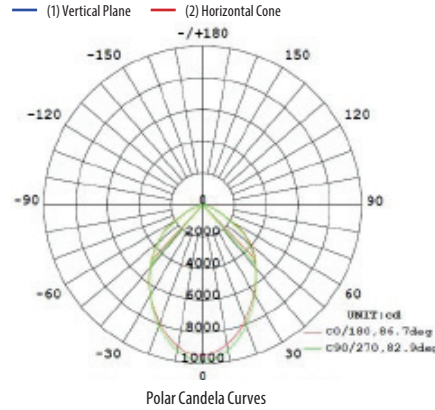
LED die cast high bay fixture
LCG-UFO

Photometrics

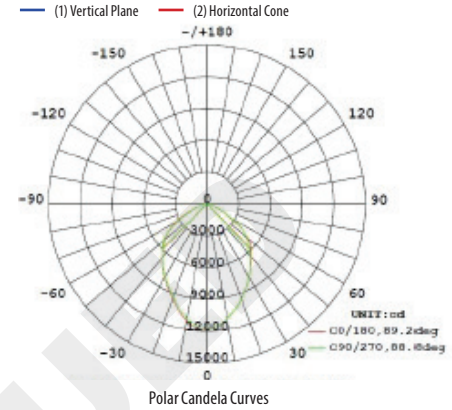
100 W



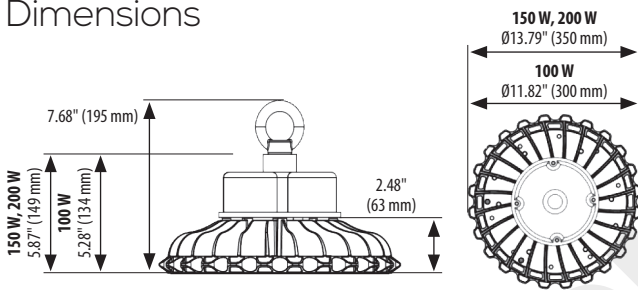
150 W



200 W



Dimensions



Accessories



Ordering information

Part number

Example: LCG-UFO-150W-U-40K-BK-D1

LCG-UFO- [] - [] - [] - [] -D1

Power

Code	Desc.
100W	100 W
150W	150 W
200W	200 W

Voltage

Code	Description
U	120-277 VAC
H	347-480 VAC*

Kelvin temperature

Code	Description
40K	4000 K
50K	5000 K

Finish

Code	Description
BK	Black
WT	White*

* Available by special order, please contact SloanLED for lead times.

† Shade fits 100 W unit only.

SloanLED Headquarters

5725 Olivas Park Drive, Ventura, CA, USA
805.676.3200 • info@SloanLED.com

SloanLED Europe b.v.

Argonstraat 110, 2718 SN Zoetermeer, NL
+31 88 12 44 900 • europe@SloanLED.com



SloanLED.com

© 2022 SloanLED Rev G 2022-07-26



Visit product page for details.

Specifications subject to change without notice.

SloanLED®
Leaders in LED Technology