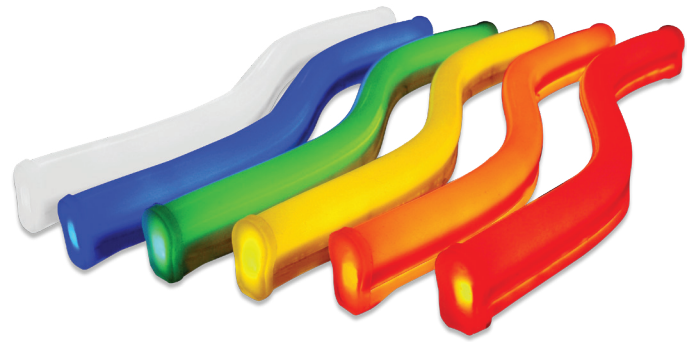


FlexiBRITE

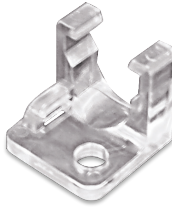
Flexible LED tubing

Specifications

Part number	Ruby Red Kit	701499-R-Size
	Citrus Orange Kit.....	701499C-O-Size
	Noviol Gold Kit.....	701499C-Y-Size
	Emerald Green Kit....	701499D-G-Size
	Bromo Blue Kit	701499D-B-Size
	Snow White Kit.....	701499D-W-Size
Dimensions	Width.....	15 mm (0.6 in)
	Base width.....	13 mm (0.5 in)
	Height.....	25 mm (1.0 in)
	Lengths.....	0.6-m (2-ft); 3.0-m (10-ft)
In-field bends	Radial bend.....	305 mm (12 in)
	Flat bend.....	25 mm (1 in)
Operating temperature	-40° C to +70° C	
Protection class	IP66	
Power per meter/foot	9.2 W/2.8 W	
Power capacity	6 m (20 ft) per SloanLED 60 W 12 VDC power supply	
Colors ¹	Ruby Red, Citrus Orange, Noviol Gold, Emerald Green, Bromo Blue, Snow White	
Mounting	Mounting Clips	701572-25
	Mounting Track	701456-10
Packaging	0.6-m (2-ft) or 3.0-m (10-ft) kit with end caps and mounting clips (3.0-m [10-ft] kit includes 2 end caps and 25 mounting clips, 0.6-m [2-ft] kit includes 2 end caps and 6 mounting clips)	



Accessories



Mounting Clip
701572-25



Mounting Track
701456-10

Unlit product color chart

Ruby Red PATONE 179 C	Citrus Orange PATONE 1655 C	Noviol Gold PATONE 3955 C
Emerald Green PATONE 2242 C	Bromo Blue PATONE 2184 C	

Power Supply Capacity

12 VDC Power supply ²	All colors
	Maximum meters/feet
25 W Power supply	2.44/8
60 W Power supply	6/20
120 W Power supply	6/20 × 2
Power used per meter/foot in watts	9.2/2.80

NOTE: When mixing modules of different sizes/colors or various products on the same power supply, simply add all the power requirements for the respective footages of each product. Then choose appropriate power supplies to provide adequate power output. The actual number of power supplies needed may vary based on how the materials are distributed across the project.

Item description	Cut increments
Ruby Red, Citrus Orange, Noviol Gold Kits	50 mm (2 in)
Emerald Green, Bromo Blue, Snow White Kits	38 mm (1.5 in)

1 See "Unlit product color chart" for Pantone color equivalents.
2 Configured for Class 2 Output.



FlexiBRITE is covered by US and foreign patents pending and covered by the following US patents issued: 6,776,504 and 7,213,941 and European Patent No. 1756471

SloanLED Headquarters
805.676.3200 • info@SloanLED.com

SloanLED Europe b.v.
+31 88 12 44 900 • Europe@SloanLED.com



SloanLED.com

© 2019 SloanLED Rev C 2019-07-01

Specifications subject to change without notice.

