

# Optimus

LED area luminaire

## LCG-SB

- Tier 1 LED for high luminous efficiency and long life
- Die cast aluminum design for better cooling and durability
- Excellent optical design
- Photocell control accessory can be added during installation
- 1-10 VDC dimming driver standard

## Specifications

### Electrical

**Input voltage** ..... 100-277 VAC or 347-480 VAC<sup>‡</sup>

Size	System efficacy
300 W	132 lm/W
200 W	135 lm/W
150 W	141 lm/W
100 W	133 lm/W
60 W	146 lm/W

Data based on 5000 K model.

### Lighting

#### Light output (nominal)

Size	Light output (nominal)	Pole height & LUX correlation (based on 50' dia. area, Type V optics, 5000 K CCT)															
		3.6 m (12')		4.5 m (15')		6.0 m (20')		7.6 m (25')		9.0 m (30')		10.5 m (35')		12 m (40')			
		Min	Max	Min	Max	Min	Max	Min	Max	Min	Max	Min	Max	Min	Max		
300 W	39,600 Lumens	48	334	62	215	52	118	43	75	35	52	27	38	22	29		
200 W	27,200 Lumens	31	215	41	140	35	75	28	48	23	33	17	25	14	19		
150 W	21,150 Lumens	27	162	33	108	28	57	24	37	18	25	14	18	12	14		
100 W	13,300 Lumens	17	108	21	65	18	37	15	24	12	16	10	12	8	9		
60 W	8,750 Lumens	12	75	14	43	13	25	11	16	9	11	7	8	5	7		

**Light distribution** ..... Type II, Type III, Type IV<sup>†</sup>, and Type V

**Color temperature (CCT)** ..... 3000 K<sup>†</sup>, 4000 K, 5000 K

**Color rendering (CRI)** ..... >70

**Dimming** ..... 1-10 VDC dimmable driver

\* Based on LED component manufacturer data.

† Available by special order, please contact SloanLED for lead times.

‡ 347-480 VAC only available on 150 W, 200 W, and 300 W, special order.

§ Mounting arms, Trunion, and Slip-fitter shipped along side. Field assembly required.

¶ Optional photocell shown.



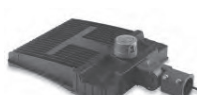
Adjustable Arm



Straight Arm<sup>¶</sup>



Trunion<sup>¶</sup>



Slip-fitter<sup>¶</sup>



60 W & 100 W



150 W & 200 W



300 W

### Performance

**Ingress protection** ..... IP66

**Operating temperature** ..... -30° C to 45° C (-22° F to 113° F)

**Life rating** ..... L<sub>70</sub> @ 25° C per TM21-11  
Tested ..... 50,000 hours

**Surge protection** ..... 4KV / 6KV

### Construction

**Body** ..... Die cast aluminum

**Body colors** ..... Black<sup>†</sup>, Bronze, Grey<sup>†</sup>, and White<sup>†</sup>

**Dimensions L × W × H** ..... **300 W** ..... 641 mm × 403 mm × 85 mm  
(25.3" × 15.9" × 3.4")

**150 W / 200 W** ..... 601 mm × 283 mm × 85 mm  
(23.7" × 11.2" × 3.4")

**60 W / 100 W** ..... 601 mm × 283 mm × 85 mm  
(23.7" × 11.2" × 3.4")

### Mounting<sup>§</sup>

**Adjustable Arm<sup>†</sup>** ..... Side mounts to a square or round pole with no additional hardware. Can be used to mount fixture to a wall. Knuckle can be adjusted 180° up/down.

**Straight Arm** ..... Static mount at 90° from mounting surface. Side mounts to a square or round pole with no additional hardware. Can be used to mount fixture to wall. Required for Dark Sky Compliance.

**Trunion<sup>†</sup>** ..... U-bracket fitters allows for 180° (up and down) adjustment from the mounting surface. Transforms the fixture into a floodlight.

**Slip-fitter** ..... Mounts pole top on a 60 mm (2.375") pole or tenon and adjusts 105° in 5° increments.

### Documentation

**Warranty** ..... 5-year limited

**Agency listings** ..... CULus, CE, FCC

**Files available** ..... LM-79, LM-80, IES

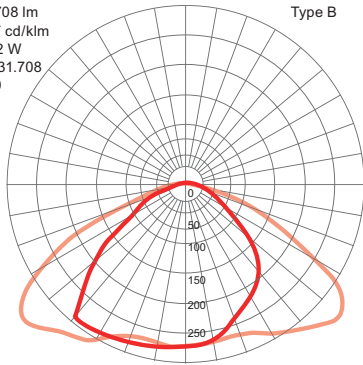
# Optimus

LED area luminaire  
LCG-SB

## Photometrics

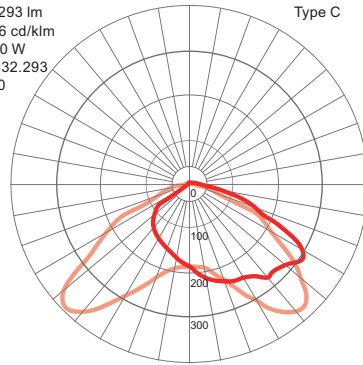
### Type II

Lamp=31 708 lm  
Max=291.7 cd/klm  
Power=292 W  
Multiplier=31.708  
Degrees=0



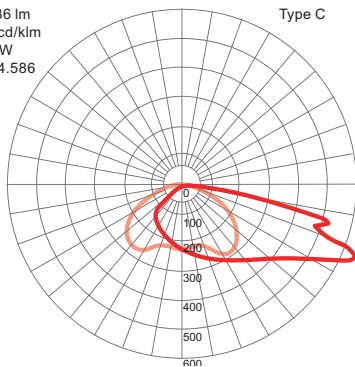
### Type III

Lamp=32 293 lm  
Max=386.6 cd/klm  
Power=300 W  
Multiplier=32.293  
Degrees=0



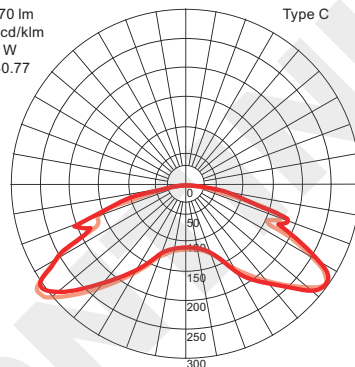
### Type IV

Lamp=34 586 lm  
Max=644.1 cd/klm  
Power=289 W  
Multiplier=34.586  
Degrees=0



### Type V

Lamp=40 770 lm  
Max=313.6 cd/klm  
Power=299 W  
Multiplier=40.77  
Degrees=0



## EPA rating

Size	Fixture quantity & mounting config.		Single	2 @ 90	2 @ 180	3 @ 90	3 @ 120	4 @ 90	2 side by side	3 side by side	4 side by side
	Mounting type	Tilt	Icon	Icon	Icon	Icon	Icon	Icon	Icon	Icon	Icon
60 W & 100 W	Slip-fitter	0°	0°	0.67	0.99	1.34	1.66	2.15	1.98	1.34	2.01
150 W & 200 W		0°	0°	0.67	0.99	1.34	1.66	2.15	1.98	1.34	2.01
300 W		0°	0°	0.72	1.17	1.44	1.89	2.42	2.34	1.44	2.16
60 W & 100 W	Straight arm	0°	0°	0.67	0.99	1.34	1.66	2.15	1.98	1.34	2.01
150 W & 200 W		0°	0°	0.67	0.99	1.34	1.66	2.15	1.98	1.34	2.01
300 W		0°	0°	0.72	1.17	1.44	1.89	2.42	2.34	1.44	2.16
60 W & 100 W	Adjustable arm	0°	0°	0.67	0.99	1.34	1.66	2.15	1.98	1.34	2.01
150 W & 200 W		0°	0°	0.67	0.99	1.34	1.66	2.15	1.98	1.34	2.01
300 W		0°	0°	0.72	1.17	1.44	1.89	2.42	2.34	1.44	2.16
60 W & 100 W	Trunnion	0°	0°	0.67	0.99	1.34	1.66	2.15	1.98	1.34	2.01
150 W & 200 W		0°	0°	0.67	0.99	1.34	1.66	2.15	1.98	1.34	2.01
300 W		0°	0°	0.72	1.17	1.44	1.89	2.42	2.34	1.44	2.16

# Optimus

LED area luminaire

LCG-SB

## Ordering information

Part number

Example: LCG-SB-100W-U-50K-T3-BZ-S-D1

LCG-SB- [ ] - [ ] - [ ] - [ ] - [ ] - [ ] -D1

Power

Code	Desc.
300W	300 W
200W	200 W
150W	150 W
100W	100 W
60W	60 W

Voltage

Code	Desc.
U	100-277 VAC
H	347-480 VAC <sup>§</sup>

Color temperature

Code	Desc.
50K	5000 K
40K	4000 K
30K	3000 K*

Light distribution

Code	Desc.
T5	Type V
T4	Type IV
T3	Type III
T2	Type II

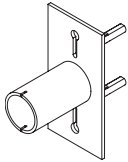
Body color

Code	Desc.
BK	Black*
BZ	Bronze
GY	Grey
WT	White*

Mounting<sup>Δ</sup>

Code	Desc.
A	Straight arm
K	Adjustable arm*
S	Slip-fitter
T	Trunion

## Accessories



### Photocell Socket<sup>¶</sup>

NEMA 3-pin socket  
601053



### Universal Voltage Photocell<sup>¶</sup>

401762

### 60 mm (2.375") Tenon Kit

#### Square poles

601102-BK (Black)

601102-BZ (Bronze)

601102-CC-SL (Silver)<sup>†</sup>

601102-CC-WH (White)<sup>‡</sup>

#### Round poles

601017-BK-3.0 (Black)

601017-BZ-3.0 (Bronze)

601017-SL-3.0 (Silver)<sup>†</sup>

601017-WH-3.0 (White)<sup>‡</sup>

\* Available by special order, please contact SloanLED for lead times.

† Matches Grey (GY) finish.

‡ Matches White (WH) finish.

§ 347-480 VAC only available on 150 W, 200 W, and 300 W, special order.

¶ 100 - 277 VAC

Δ Mounting arms, Trunion, and Slip-fitter shipped along side. Field assembly required.

SloanLED Headquarters  
805.676.3200 • info@SloanLED.com

SloanLED Europe b.v.  
+31 88 12 44 900 • Europe@SloanLED.com

SloanLED.com

