

Optimus

LED area luminaire

LCG-SB

- Tier 1 LED for high luminous efficiency and long life
- Die cast aluminum design for better cooling and durability
- Excellent optical design
- Photocell control accessory can be added during installation
- 1-10 VDC dimming driver standard

Specifications

Electrical

Input voltage 100-277 VAC or 347-480 VAC[‡]

Size	System efficacy
300 W	132 lm/W
200 W	135 lm/W
150 W	141 lm/W
100 W	133 lm/W
60 W	146 lm/W

Data based on 5000 K, Type III model.

Lighting

Light output (nominal)

Size	Light output (nominal)	Pole height & FC correlation (based on 50' dia. area, Type V optics, 5000 K CCT)													
		12' (3.6 m)		15' (4.5 m)		20' (6.0 m)		25' (7.6 m)		30' (9.0 m)		35' (10.5 m)		40' (12 m)	
		Min	Max	Min	Max	Min	Max	Min	Max	Min	Max	Min	Max	Min	Max
300 W	39,600 Lumens	4.5	31	5.8	20	4.8	11	4.0	7	3.2	4.8	2.5	3.5	2.0	2.7
200 W	27,200 Lumens	2.9	20	3.8	13	3.1	7	2.6	4.5	2.1	3.1	1.6	2.3	1.3	1.8
150 W	21,150 Lumens	2.5	15	3.1	10	2.6	5.3	2.2	3.4	1.7	2.3	1.3	1.7	1.1	1.3
100 W	13,300 Lumens	1.6	10	1.9	6	1.7	3.4	1.4	2.2	1.1	1.5	0.9	1.1	0.7	0.8
60 W	8,750 Lumens	1.1	7	1.3	4	1.2	2.3	1.0	1.5	0.8	1.0	0.6	0.7	0.6	0.5

Light distribution Type II, Type III, Type IV[†], and Type V

Color temperature (CCT) 3000 K[†], 4000 K, 5000 K

Color rendering (CRI) >70

Dimming 1-10 VDC dimmable driver

* Based on LED component manufacturer data.

† Available by special order, please contact SloanLED for lead times.

‡ 347-480 VAC only available on 150 W, 200 W, and 300 W, special order.

§ Mounting arms, Trunnion, and Slip-fitter shipped along side. Field assembly required.

¶ Optional photocell shown.

Δ Performance+ Turnkey Service Warranty applies to U.S. & Canada installations ONLY.



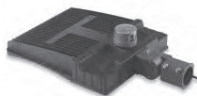
Adjustable Arm



Straight Arm[¶]



Trunnion[¶]



Slip-fitter[¶]



60 W & 100 W



150 W & 200 W



300 W

Performance

Ingress protection IP66

Operating temperature -22° F to 113° F (-30° C to 45° C)

Life rating L₇₀ @ 25° C per TM21-11
Tested 50,000 hours

Surge protection 4KV / 6KV

Construction

Body Die cast aluminum

Body colors Black[†], Bronze, Grey[†], and White[†]

Dimensions L × W × H **300 W** 25.3" × 15.9" × 3.4"
(641 mm × 403 mm × 85 mm)
150 W / 200 W 23.7" × 11.2" × 3.4"
(601 mm × 283 mm × 85 mm)
60 W / 100 W 23.7" × 11.2" × 3.4"
(601 mm × 283 mm × 85 mm)

Mounting[§]

Adjustable Arm[†] Side mounts to a square or round pole with no additional hardware. Can be used to mount fixture to a wall. Knuckle can be adjusted 180° up/down.

Straight Arm Static mount at 90° from mounting surface. Side mounts to a square or round pole with no additional hardware. Can be used to mount fixture to wall. Required for Dark Sky Compliance.

Trunnion[†] U-bracket fitters allows for 180° (up and down) adjustment from the mounting surface. Transforms the fixture into a floodlight.

Slip-fitter Mounts pole top on a 2.375" (60 mm) pole or tenon and adjusts 105° in 5° increments.

Documentation

Warranty 5-year limited and Performance+ Turnkey Service Warranty^Δ

Agency listings CULus, CE, FCC

Files available LM-79, LM-80, IES

Optimus

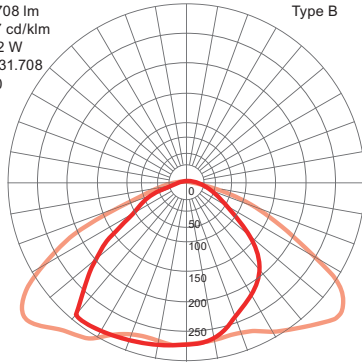
LED area luminaire

LCG-SB

Photometrics

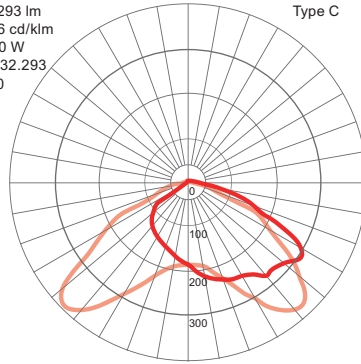
Type II

Lamp=31 708 lm
Max=291.7 cd/klm
Power=292 W
Multiplier=31.708
Degrees=0



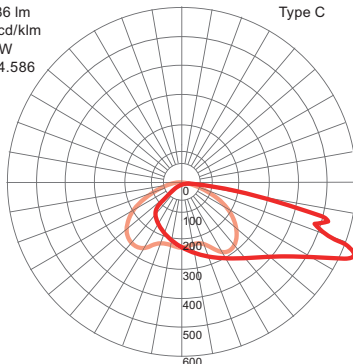
Type III

Lamp=32 293 lm
Max=386.6 cd/klm
Power=300 W
Multiplier=32.293
Degrees=0



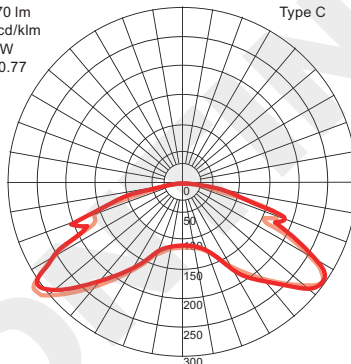
Type IV

Lamp=34 586 lm
Max=644.1 cd/klm
Power=289 W
Multiplier=34.586
Degrees=0



Type V

Lamp=40 770 lm
Max=313.6 cd/klm
Power=299 W
Multiplier=40.77
Degrees=0



EPA rating

Size	Fixture quantity & mounting config.		Single	2 @ 90	2 @ 180	3 @ 90	3 @ 120	4 @ 90	2 side by side	3 side by side	4 side by side
	Mounting type	Tilt									
60 W & 100 W	Slip-fitter	0°	0°	0.67	0.99	1.34	1.66	2.15	1.98	1.34	2.01
150 W & 200 W		0°	0°	0.67	0.99	1.34	1.66	2.15	1.98	1.34	2.01
300 W		0°	0°	0.72	1.17	1.44	1.89	2.42	2.34	1.44	2.16
60 W & 100 W	Straight arm	0°	0°	0.67	0.99	1.34	1.66	2.15	1.98	1.34	2.01
150 W & 200 W		0°	0°	0.67	0.99	1.34	1.66	2.15	1.98	1.34	2.01
300 W		0°	0°	0.72	1.17	1.44	1.89	2.42	2.34	1.44	2.16
60 W & 100 W	Adjustable arm	0°	0°	0.67	0.99	1.34	1.66	2.15	1.98	1.34	2.01
150 W & 200 W		0°	0°	0.67	0.99	1.34	1.66	2.15	1.98	1.34	2.01
300 W		0°	0°	0.72	1.17	1.44	1.89	2.42	2.34	1.44	2.16
60 W & 100 W	Trunnion	0°	0°	0.67	0.99	1.34	1.66	2.15	1.98	1.34	2.01
150 W & 200 W		0°	0°	0.67	0.99	1.34	1.66	2.15	1.98	1.34	2.01
300 W		0°	0°	0.72	1.17	1.44	1.89	2.42	2.34	1.44	2.16

Optimus

LED area luminaire

LCG-SB

Ordering information

Part number

Example: LCG-SB-100W-U-50K-T3-BZ-S-D1

LCG-SB- [] - [] - [] - [] - [] - [] -D1

Power

Code	Desc.
300W	300 W
200W	200 W
150W	150 W
100W	100 W
60W	60 W

Voltage

Code	Desc.
U	100-277 VAC
H	347-480 VAC [§]

Color temperature

Code	Desc.
50K	5000 K
40K	4000 K
30K	3000 K*

Light distribution

Code	Desc.
T5	Type V
T4	Type IV
T3	Type III
T2	Type II

Body color

Code	Desc.
BK	Black*
BZ	Bronze
GY	Grey
WT	White*

Mounting^Δ

Code	Desc.
A	Straight arm
K	Adjustable arm*
S	Slip-fitter
T	Trunion

* Available by special order, please contact SloanLED for lead times.

† Matches Grey (GY) finish.

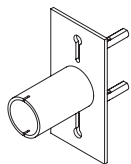
‡ Matches White (WH) finish.

§ 347-480 VAC only available on 150 W, 200 W, and 300 W, special order.

¶ 100 - 277 VAC

Δ Mounting arms, Trunion, and Slip-fitter shipped along side. Field assembly required.

Accessories



2.375" (60 mm) Tenon Kit

Square poles

601102-BK (Black)

601102-BZ (Bronze)

601102-CC-SL (Silver)†

601102-CC-WH (White)‡

Round poles

601017-BK-3.0 (Black)

601017-BZ-3.0 (Bronze)

601017-SL-3.0 (Silver)†

601017-WH-3.0 (White)‡



Photocell Socket[¶]

NEMA 3-pin socket

601053



Universal Voltage Photocell[¶]

401762

SloanLED Headquarters

5725 Olivas Park Drive, Ventura, CA, USA
805.676.3200 • info@SloanLED.com

SloanLED Europe b.v.

Argonstraat 110, 2718 SN Zoetermeer, NL
+31 88 12 44 900 • europe@SloanLED.com



SloanLED.com

© 2023 SloanLED Rev K 2023-02-15



Visit product page for details.

Specifications subject to change without notice.

SloanLED[®]
A Principal Industries Company