

SlimLINER

Low-profile outdoor and indoor linear lighting

Specifications

Part number	5000 K..... 701956-5WL461
	3500 K..... 701956-3WL461
Dimensions L × W × H	1168 mm × 23 mm × 9 mm
	(46 in × 0.89 in × 0.35 in)
Lumens per fixture	5000 K..... 970
	3500 K..... 825
In-field bends	Radial bend..... 305 mm (12 in)
Color temperatures (nominal) ..	5000 K, 3500 K
Color rendering index (CRI)	5000 K..... 70 (nominal)
	3500 K..... 82 (nominal)
Estimated product lifetime	50,000 hours (L ₇₀)
Operating temperature	-40° C to 70° C
Protection class	IP66 & IP68 ¹
Special feature	Cuttable every 150 mm (6 in) for two usable sides
Power	7.4 W per meter (2.25 W per foot), 9.0 W per fixture
Efficacy	5000 K..... 108 lm/W
	3500 K..... 92 lm/W
Fastening	Peel-n-stick or mounting clips (401203), 4 included with each unit
Power capacity	6 units per SloanLED 60 W 12 VDC power supply



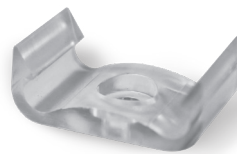
¹ IP66 & IP68 ratings provide protection for extreme outdoor and wet applications or harsh weather exposure. Do not mount in a submerged application.

Power Supply Capacity

12 VDC Power supply ² (Part number)	Power output	SlimLINER Fixtures
20 W	20 W	2
25 W	25 W	2
60 W	60 W	6
120D1 120 W [701507-120D1]	120 W	6 × 2
Power used per meter/foot in Watts		7.4 W / 2.25 W per fixture

² Configured for Class 2 Output.

Accessories



Mounting Clip

401203

Four (4) included with each unit.
Sold in bags of 25.

SloanLED Headquarters
805.676.3200 • info@SloanLED.com

SloanLED Europe b.v.
+31 88 12 44 900 • Europe@SloanLED.com



SloanLED.com